



INTRODUCTION TO GRAPHIC COMMUNICATIONS HALLOWEEN MAGIC

Information
Sheet No.

997

This is a simple project designed to get you comfortable and familiar with using a tablet in place of the customary mouse. It may take several tries to get the precise control of all tools but by far it is superior to the mouse because it is touch sensitive and tends to be more naturally intuitive. If you would like to give a tablet a spin, see Prof. Lyons and he will provide a loaner.

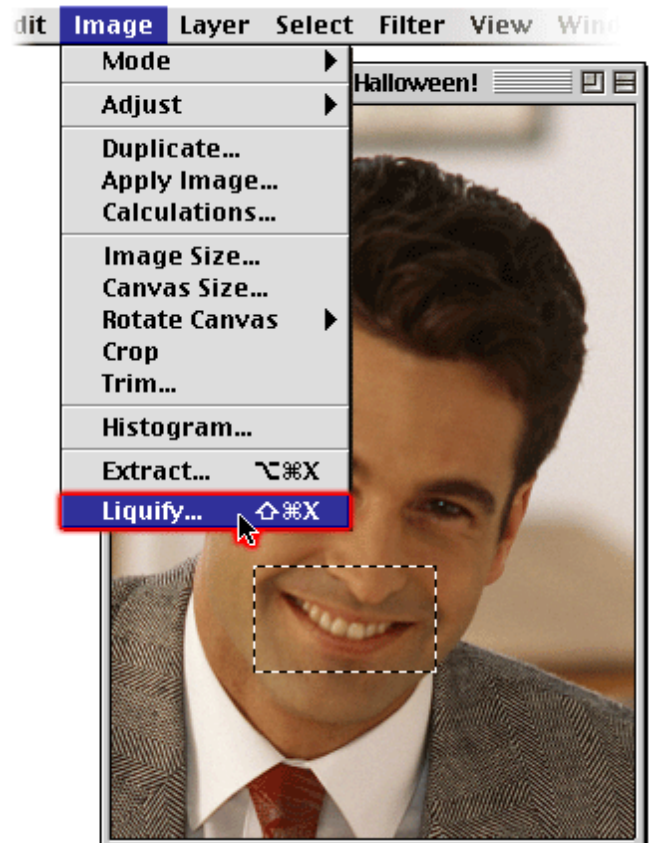


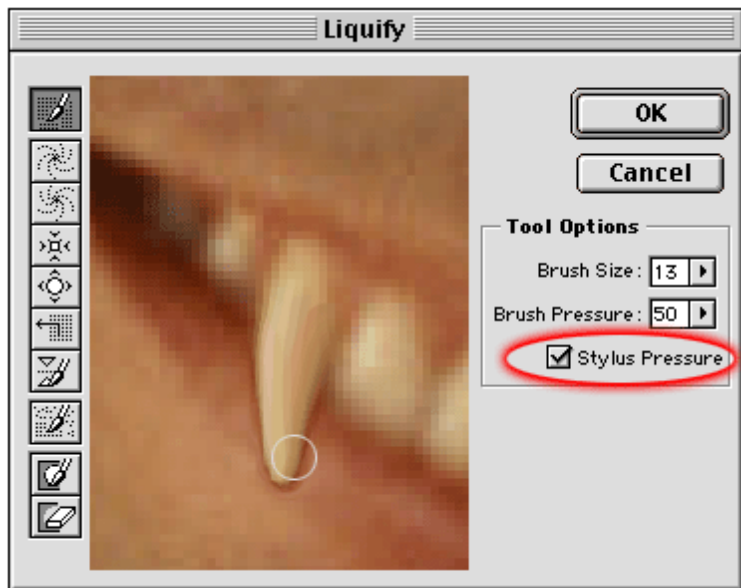
Step 1:

Here's a nice shot of our unsuspecting victim-- for Halloween he's getting ready to howl...

Step 2:

Let's start with that smile. Select it with the Marquee tool, and then select Photoshop Liquefy...



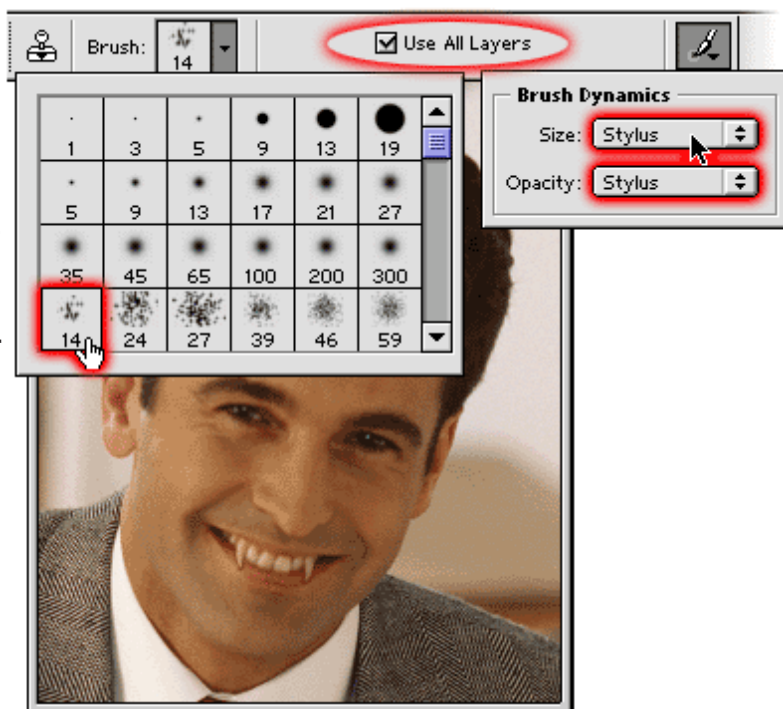


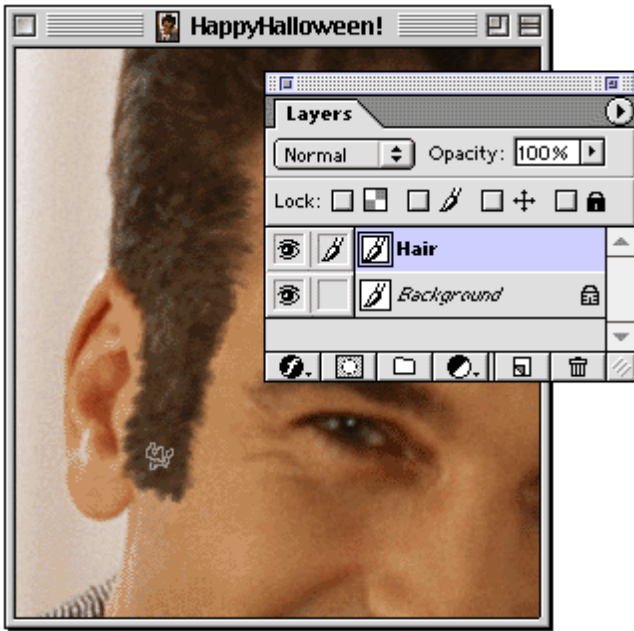
Step 3:

Liquefy is very cool -- and pressure sensitive as well. Use the Morph tool at the top-- it lets you take his teeth to a place even Bela Lugosi would admire.

Step 4:

Now add a little Wolfman-like hair. Grab a natural looking brush for the Rubber Stamp tool, and set your Brush Dynamics for Size and Opacity to Stylus-- this give you fingertip control over your strokes. Last, create a new layer to clone onto.





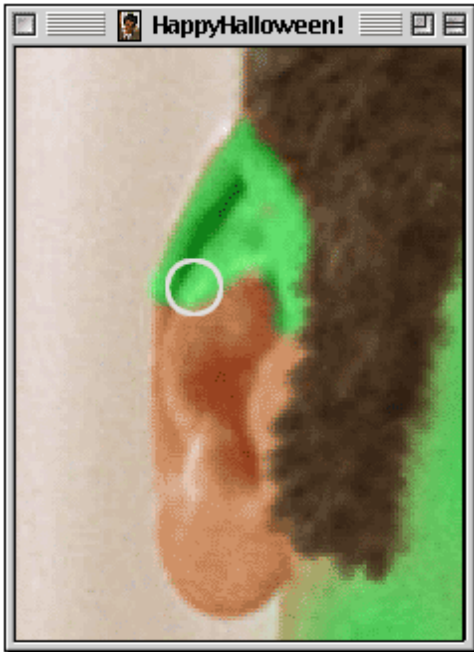
Step 5:

Now add a little hair with the Rubber Stamp-- the pressure sensitivity lets you get exactly the look you want by pressing harder for a thicker stroke, softer for a thinner, more transparent stroke.

Step 6:

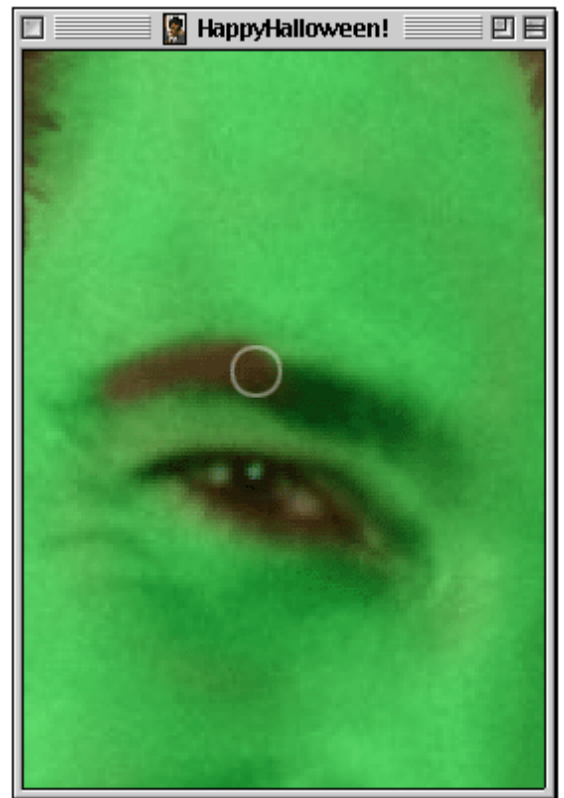
Well, you've got Dracula teeth and a little Wolfman hair-- now add a Frankenstein skin color. Start by flattening you image, and then adding a new layer set to Color.





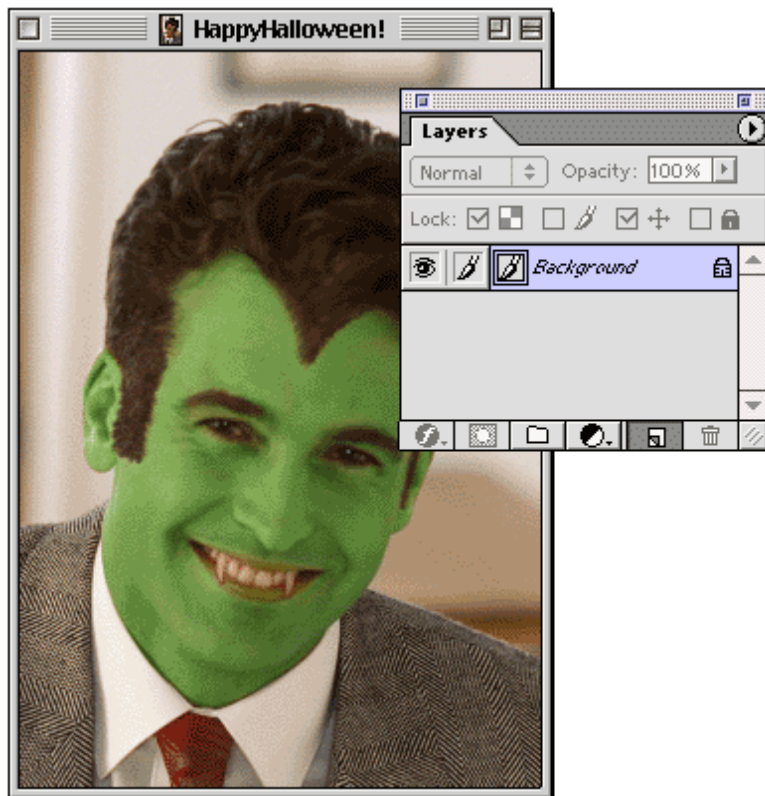
Step 7:

Grab a dark shade of green and start painting. Press lightly around the hair to get a semi-transparent look.



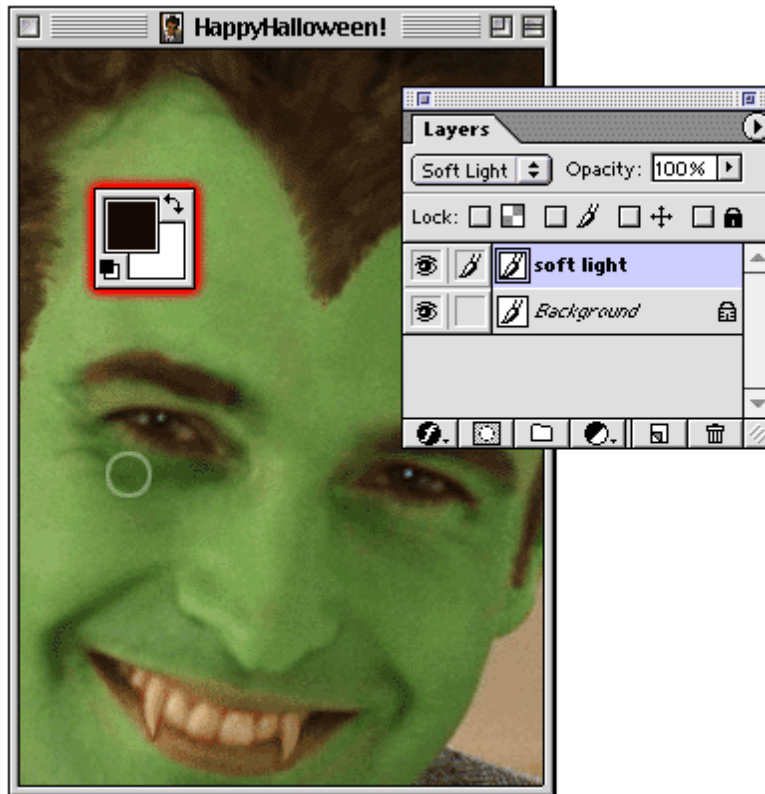
Step 8:

If you accidentally paint a little green over the eyebrows or other parts -- simply use the Eraser to remove it.



Step 9:

Now you need to bring out the whites of his eyes a bit, and knock back his skin in a couple of places. Flatten the image, and create a new Soft Light layer.



Step 10:

Painting in a Soft Light layer is like burning and dodging with none of the fuss. Paint black over wherever you want to burn -- here adding some late night shadows under his eyes. White will bring out the whites of his eyes -- it's like adding in a hypnotic gaze...

Step 11:

And there you go-- and Happy Halloween from all of us here at Wacom!

