



# INTRODUCTION TO GRAPHICS

## Silhouettes Made Simple

Information Sheet No. PS961

By Darrell Heath

Create a quick and fancy silhouette from an image with ease. The 'quick' in this process involves isolating a subject from a solid background while the 'fancy' involves creating solid Shape Layers with the Pen Tool.

### Step 1 – Open following Document Image

To begin, copy/paste the following image into Photoshop. (Or explore with your own photo) Or right click; choose Save Image from your browser context menu. Save it to a location on your computer. In Photoshop, File > Open and browse to the previously saved image(s) to open.



### Step Two: Isolate the background – Channel Chop

Since there are some highlights that intersect with the same color white background, we need to add contrast to the edges: 1. In the Channels Panel (Window > Channels), drag-and-drop the darkest Channel to the New Channel icon command. (In my case this is the Blue Channel) PS961 - SILHOUETTES MADE SIMPLE

2. With the copy of the Blue Channel active, select the Brush Tool on the Toolbar: Select a Brush Tip (I used 38 with Hardness of 35), Blend Mode: Overlay, Opacity: 69%. 3. Brush along the edges to add contrast, as I have captured. 4. Once the edges are complete (It does not have to be perfect), set the Brush Tool Options to Normal Mode, 100% Opacity and Foreground to Black (press the D key) then brush fill in the remaining areas with that black color.

Duplicate the channel that has the most contrast

1

Set Brush Tool Options: Overlay Mode, reduced Opacity, and a midrange Hardness

2

Brush the Edges with the above settings.

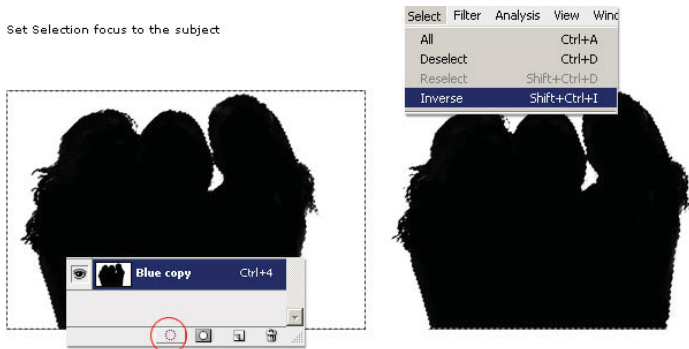
3

Brush the Interior: Normal Mode, 100%

4

### Step Three: Set focus to Selection and create Vector Shape Layer

Still in the Channels Panel, and with Blue copy active, click the Load Channel as Selection icon command (encircled in red). Then go Select > Inverse to set the focus on the actual subject and not the background.



Now that the selection is focused on the subject:

1. Click the RGB Composite Channel in the Channels Panel (encircled in red) to enable all Channels.
2. Switch to the Layers Panel and click the Add New Adjustment Fill Layer icon command (encircled in red) and from the list choose Solid Color.
3. At the Color Picker dialog, pick a color of your choice. I selected Black/#000000 and then click OK to commit.
4. A new Color Fill 1 Layer is now created from the selection.

Create Vector Shape Layer from Selection



### Step Four: Create random Vector Shapes with Pen Tool

Some Pen Tool experience will be required in this phase; however, attention to detail is not necessary. The premise is to create small vector shape areas to a different color other than the originally created Color Fill silhouette.

1. Hide the original silhouette shape Layer (Color Fill 1) in the Layers Panel.
2. Change the foreground swatch to something other than that was used for the Color Fill 1 shape (I used #91dff5)
3. Activate the Pen Tool on the Toolbar, and ensure the Options Bar Shape Layers property is active. (encircled in red)
4. Then draw in small areas of shapes (sample start below – Shape 1)

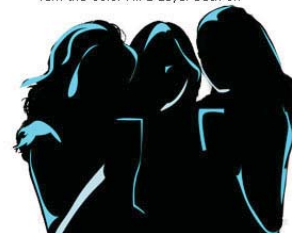
Continue adding other shapes defining certain areas of the image (lower left) then once you decide there is enough, turn on Color Fill 1 Layer.



Multiple shapes



Turn the Color Fill 1 Layer back on



Then as an added feature, add optional background styles/effects (encased in red on the next page) between the Color Fill 1 Layer and the Background Layer for your final image.



				Shape 2
				Shape 1
				<b>Color Fill 1</b>
				Shape 19
				Shape 13
				Gradient Fill 1
				Color Fill 5
				Layer 0