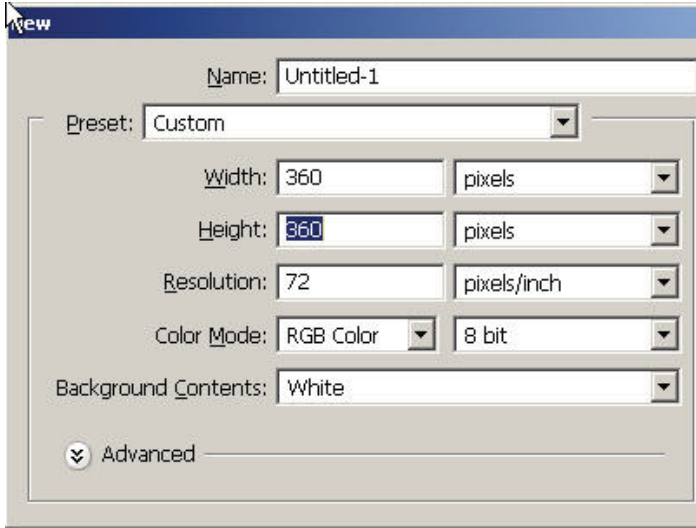




INTRODUCTION TO GRAPHICS RAT WARS

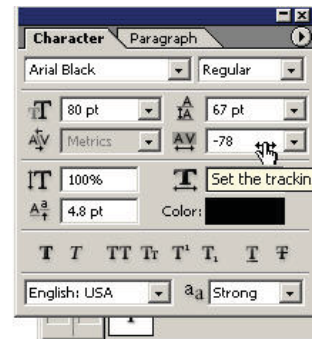
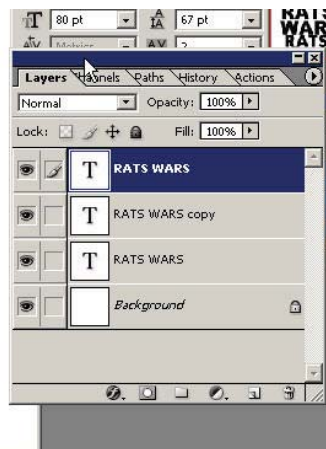
Information Sheet No. PS910

Start off with a decent sized document.



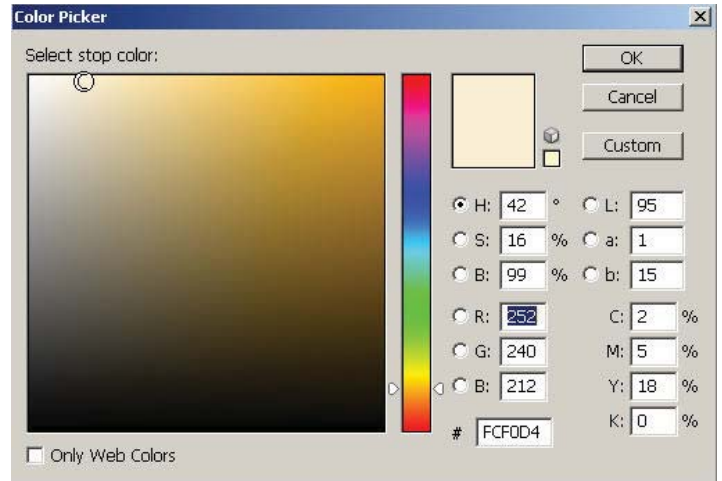
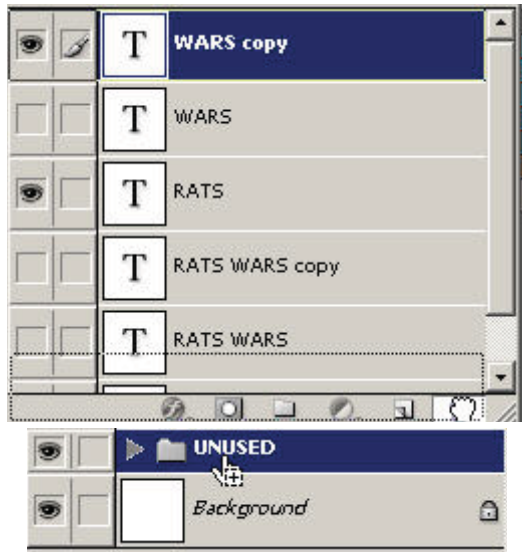
What you're going to do here is create a similar version to a very well-known movie logo and marketing campaign. Take the Text tool and enter some text and then scroll through the different fonts in your collection to come up with the closest possible alternative that you can re-enact.

Here Arial Black is being used. Set the tracking to a negative amount to bring the letters closer together.



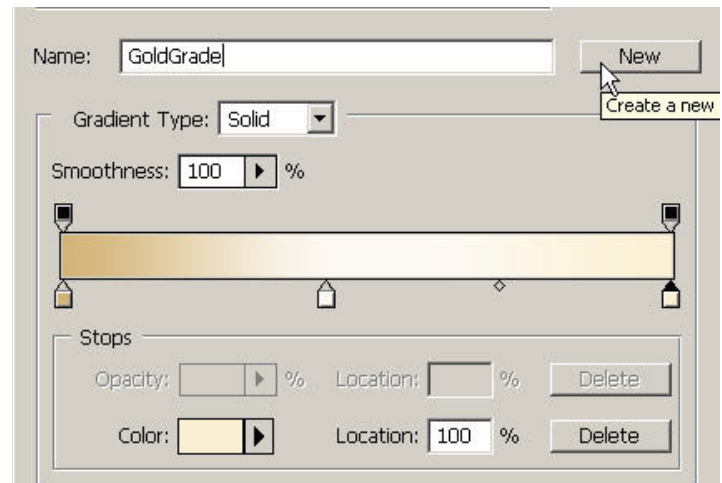
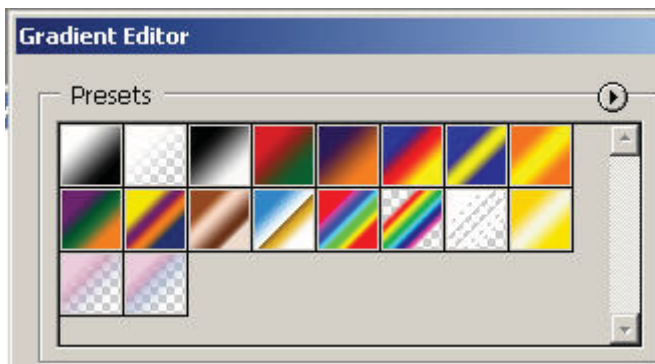
In the layers palette, create a new layer set (the folder) and drag the unused layers (turn the eyeballs off) into the folder in case you want to use them later. You may tend to save lots of additional layers (or you might just want to trash them).

As a designer you can learn a lot from studying and breaking apart famous designs and trying to re-produce them.



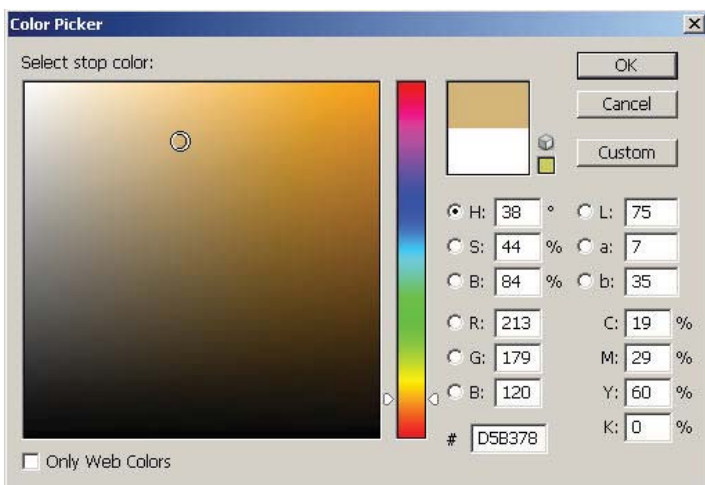
Go to your gradient tool and you can see your gradients in the options bar. Here you are going to create a new gradient and store it there for later use.

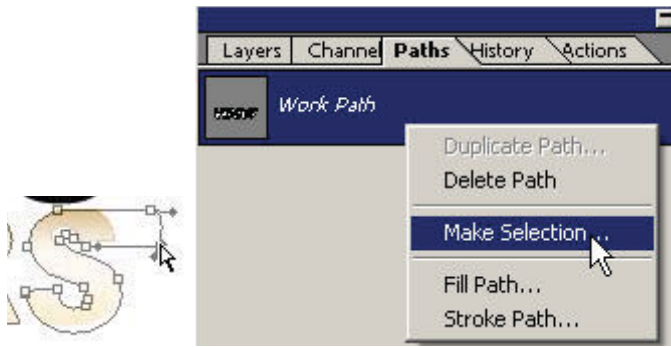
Create a very light white in the same shade as the middle color stop (click on the bottom of the bar to add a new stop and drag away to delete). You can create a new color stop from any gradient. Do the last color stop in this color. Now you have a nice sandy warm color gradient. Go ahead and name it and click New to put it in the gradient menu. Remember this process.



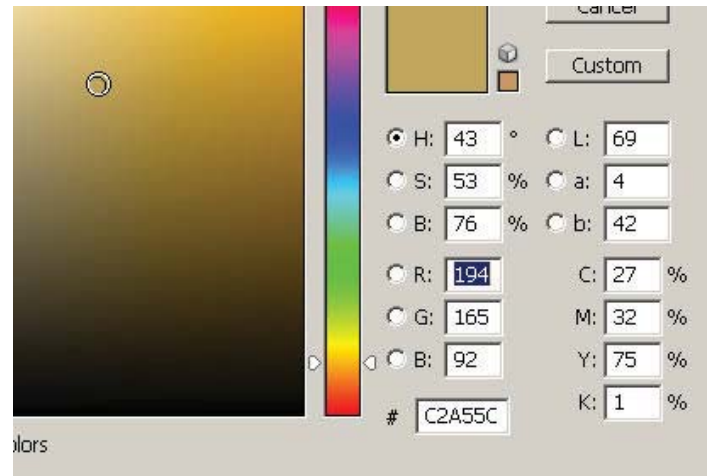
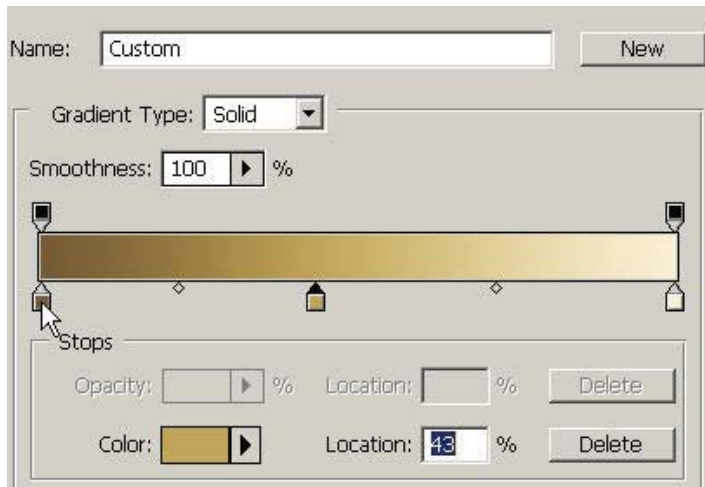
You are going to create your own custom color stops. Click on the first color stop and choose a color that is very similar to this. Remember that in the color picker you can use the turkey baster/eyedropper to sample the colors from an open and visible document.

If you have got an important project or tons of spare time on your hands you can create and modify each letter. First you must rasterize the layer, select it, right click and make work path, then use your path editing tools to edit the anchor points. Then you can make selection in the paths palette and refill it on a new layer with your gradient.



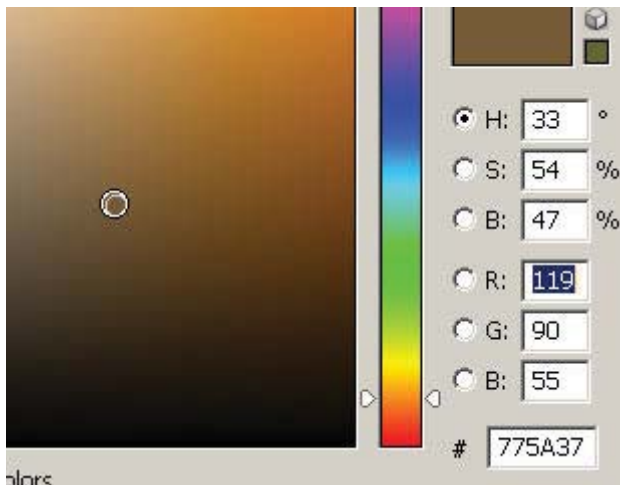
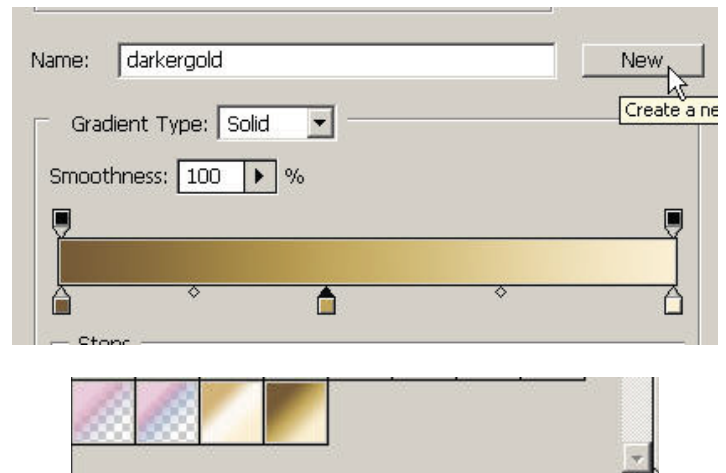


Now double click on the gradient editor to create another custom gradient. Use these approximate colors. This will be a darker Tatooine sand color.



Choose these approximate color stops and name this new gradient. Press New to store the new gradient (it will override the other gradient you started from because they are both saved).

Here you can see your new gradients. If you see an image with a great color scheme/gradient that you'd like to scan in you can easily recreate the gradient with the eyedropper. Otherwise you'll have to guess.

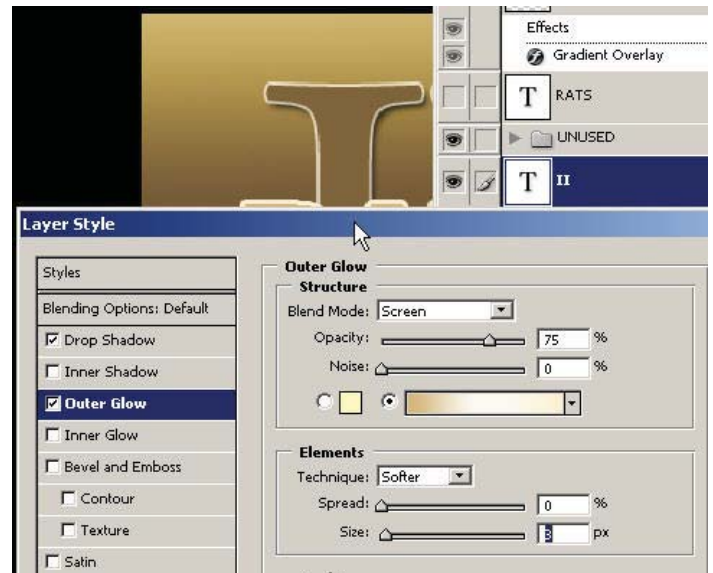


Create a very large "II". This layer will be placed above the background and below the other text in the layers palette. You'll want to center it. Note the text settings used is Adobe Garamond . . . you may choose something similar if you don't have it.

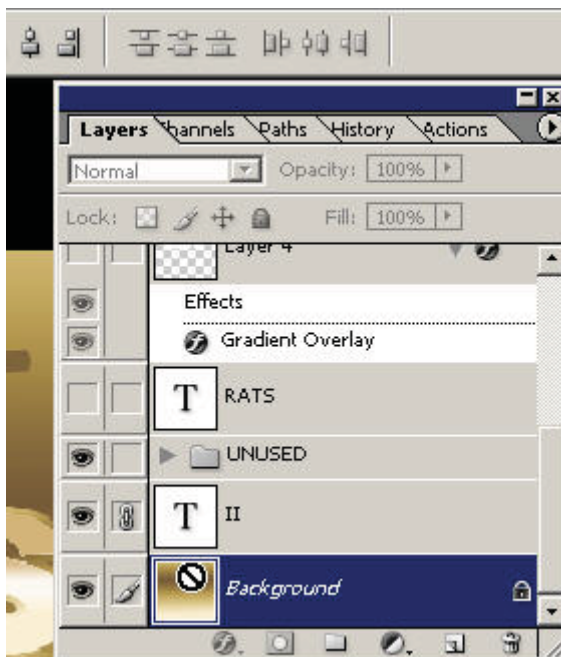


You can add a slight drop shadow to this layer by right clicking and choosing blending options and enter drop shadow editing box. You could also add a light sandy yellow outer glow.

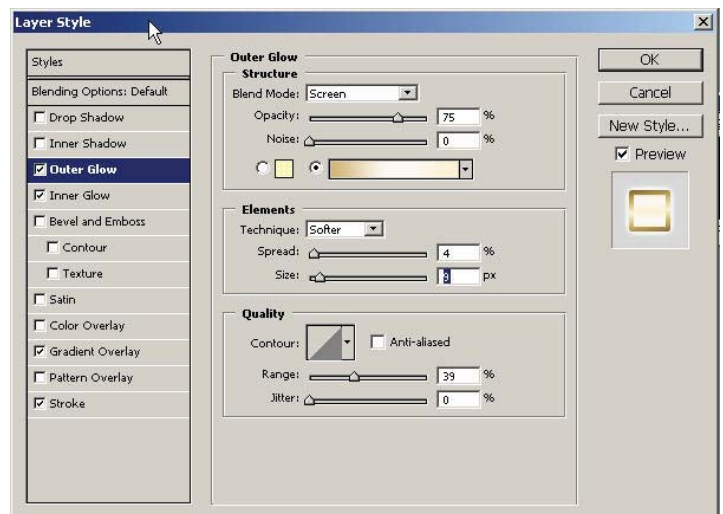
Here's where the action is: Go to one of your text layers (don't need to be rasterized) and bring up the layer styles. If you want to recreate the exact effect, just use the same settings in all of these visual screenshots.



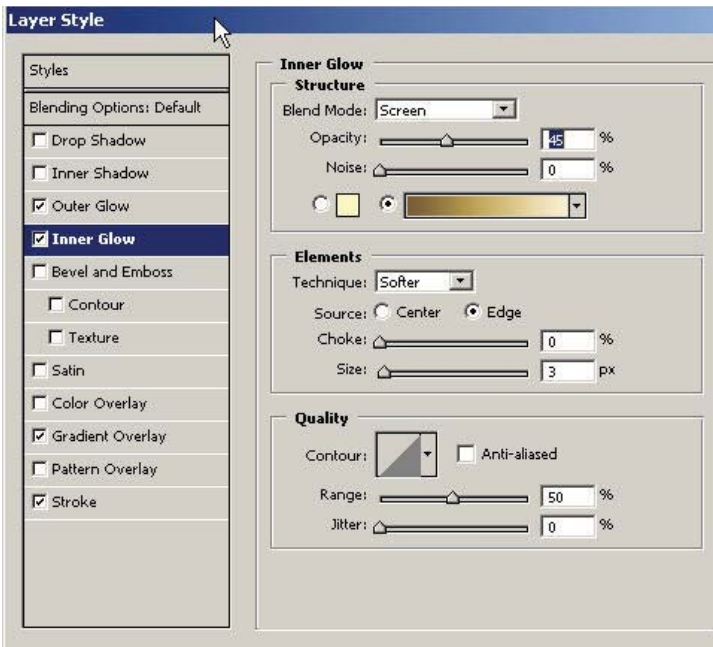
For the Outer glow, use the lighter of the two gradients. Just get in there with the blending modes and spend some time. You have the option of using a gradient for many of these effects so here you're just using them to create a nice gold text inline with our theme.



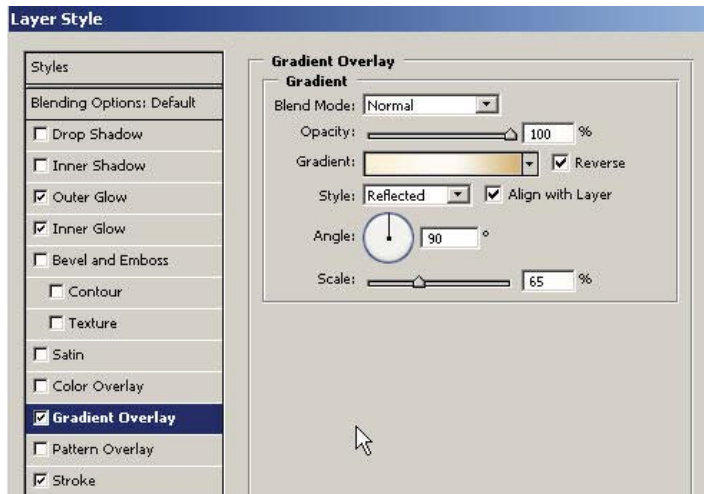
Basically you're going to be doing several different layer styles and trying out different variations using the custom gradients that you have created.



Even a slight and tight inner glow wouldn't hurt.



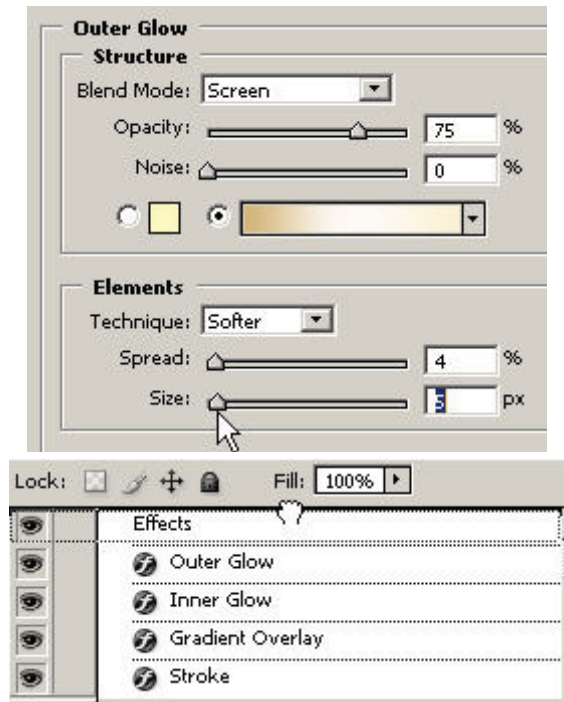
This is perhaps the most important one; the gradient overlay. Keep making adjustments until you are happy or just use those shown.



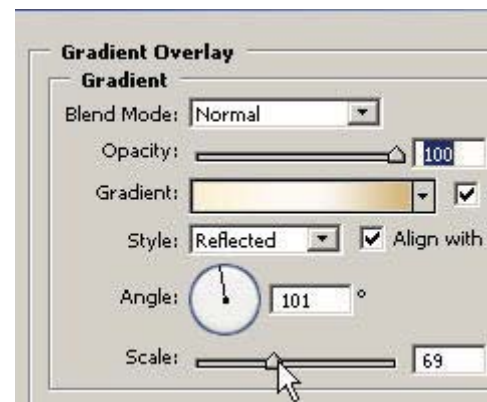
In the layers palette you can turn on and off each of the layer effects individually or all at once. The outer glow turned out to be way brighter than anticipated so double click on it to bring up the editing dialog box and lower the settings.

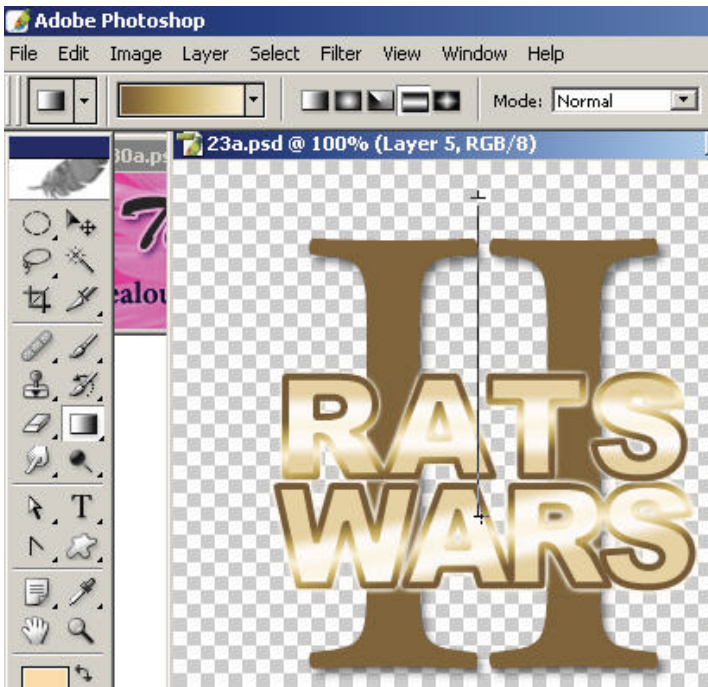


Remember that you can drag effects by using "Thing" to the bottom of another layer as shown for an exact duplicate.

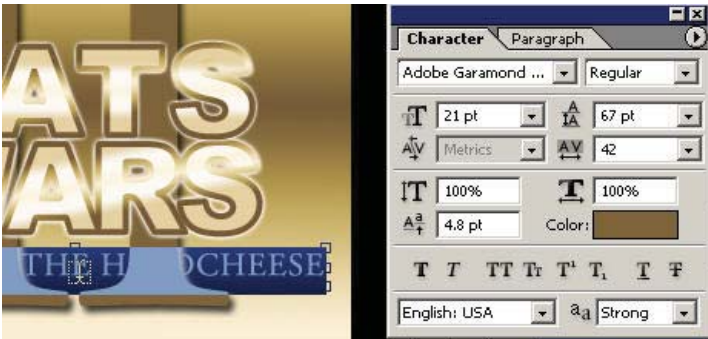


There was a gradient background layer on earlier. Here Create a new background layer and hide the original in the layers palette to show the invisibleness that is going to be swiped with the dark sand gradient right now. Because of the location in the layers palette, that is where it will be in carbon freeze.





Add some additional episode text. If it is too light you can change the color when it is selected in the text editing field from the color chooser and alt backspace.



That's all there is to it. Here is two different versions. The black text is a little more legible and has a stroke of 1 white on outside.

