



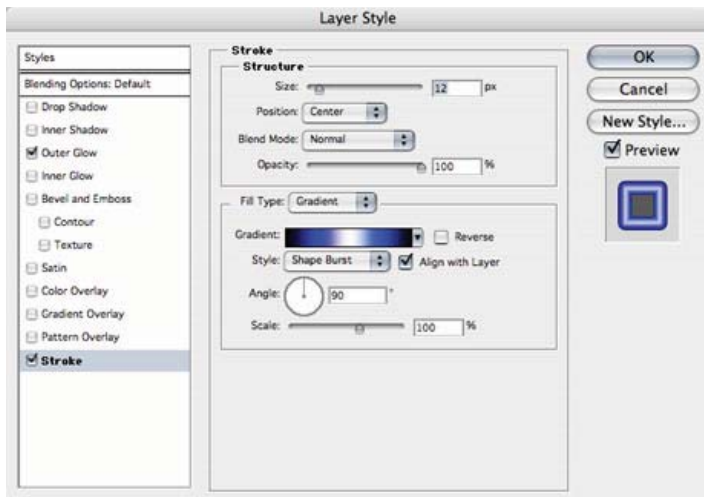
# INTRODUCTION TO GRAPHICS

## Neon Sign II

Information Sheet No. PS854

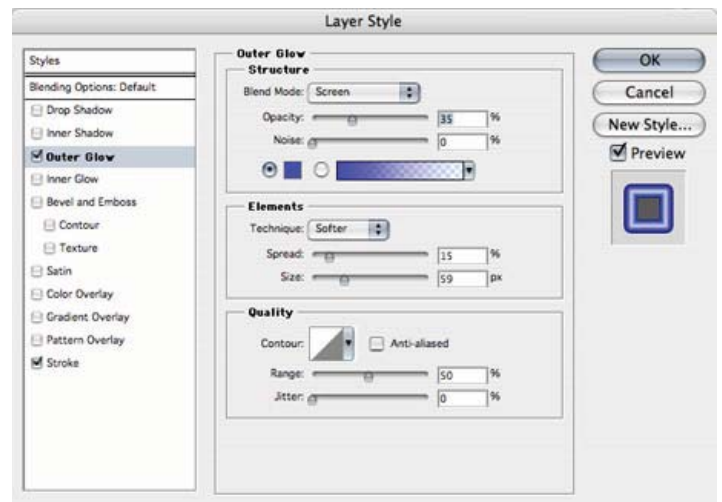
Choose a bold font and type up your sign. Fill it with black on black background. At this point your sign is off. :)

Let's switch it on. Click the first icon from the left on the bottom of the Layers palette to add a layer style. Choose Stroke and follow the settings below. Make sure you choose a big number for the Size, such as 35. Select Position: Center. Fill Type: Gradient. Style: Shape Burst. Select Position: Center. Fill Type: Gradient. Style: Shape Burst.

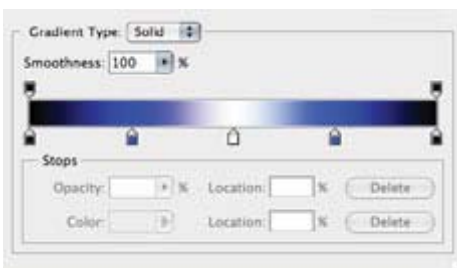


their color by double clicking them. Click OK to go back to the Layer Style window.

As a last step click the Outer Glow layer style and select a similar color to the one you have chosen for the gradient. Choose a low Opacity but higher numbers for Spread and Size.



Click the gradient to bring up the the Gradient editor window. Here you need to create a gradient with blacks on the edges, the same bright color at 25% and 75%, and white in the middle.



The cool thing about this technique is that everything is in vectors, and you can freely resize your artwork to any resolution.

You can add new color stops by clicking at the bottom edge of the gradient. Delete them by selecting and hitting backspace. Edit