



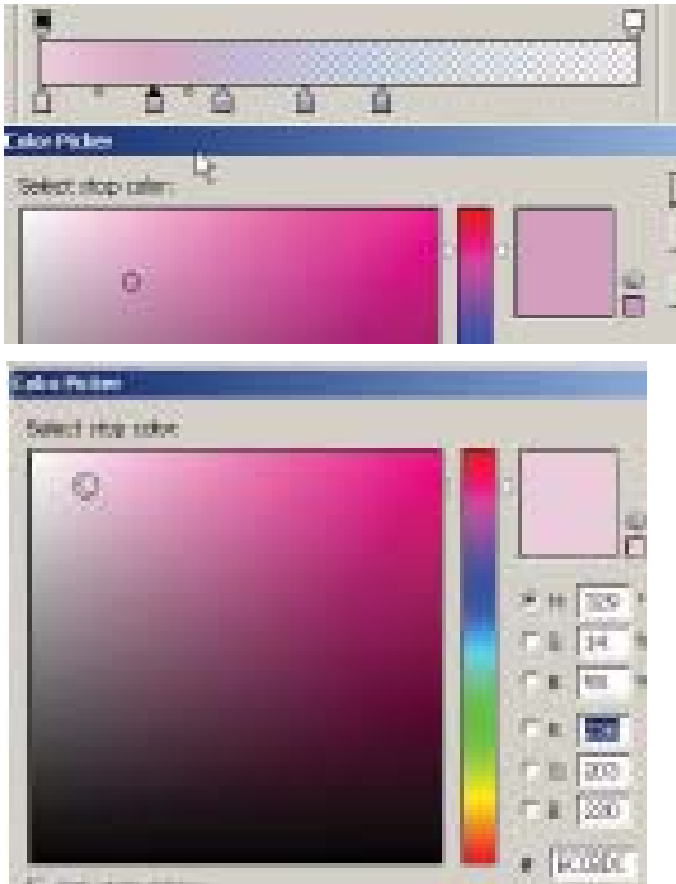
## INTRODUCTION TO GRAPHICS

# Fantasy Photograph

Information Sheet No. PS754

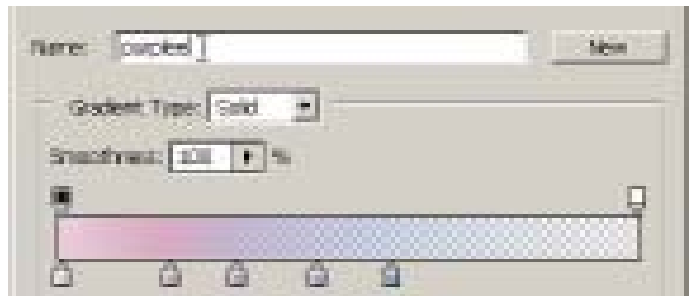
Start by creating a new document. This one is 521 X 837 @ 150 dpi (because of the source document used in this activity). You may have different colors which work with your selected photograph.

You are automatically on the background layer. Now go to the gradient tool. Double click on the gradient window to bring up the gradient editor. You are going to create color stops here that are similar to these colors. Click below the bar to create a new color stop or double click to edit a current one.

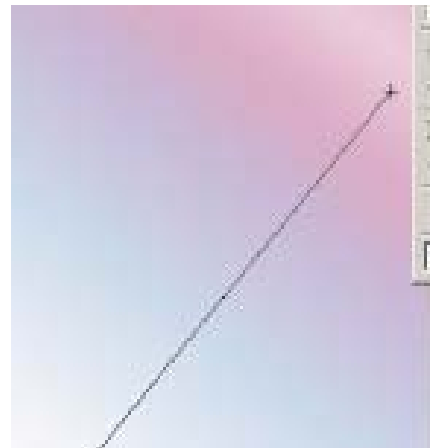


Note that there are no exact color coordinates. This is because you must begin thinking as a Photoshop designer and it helps develop your "eye". Remember you can open a docu-

ment in Photoshop and use the eyedropper tool in the color chooser for your gradient stops to get the exact color your looking for from any open document in the workspace. After you have chosen your color stops to look something like this (4-5 of them in slightly different light shades) name your gradient and click New.



Now go ahead and swipe at an angle across the background layer.



Now that you've created the nice gradient and swiped it at a diagonal on your background layer, go ahead and get your main character. This is going to be a nice portrait design and the better the quality of your original source images, the better end quality potential of the design.

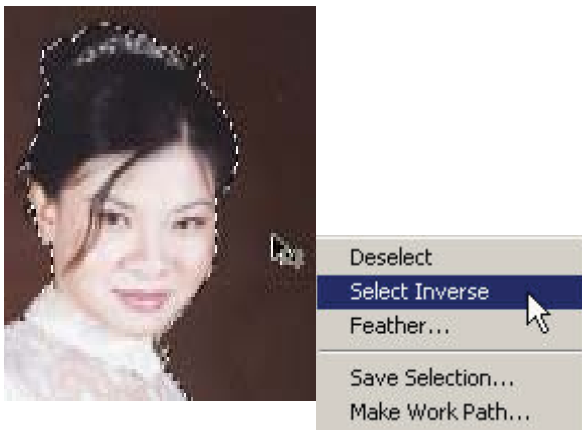
You may use those supplied or ones from other sources of your own choosing.



On the source image document you'll need to get a selection of your star character. You can use many methods within Photoshop. The magic wand was used here with a medium tolerance of 20. This will select the background pixels.



Now switch to the move tool and drag your selection (from within the selected area) over to the document that you're working on. In this case there are two different images from the same professional photo shoot.



Now right click and choose select inverse to close in on the desired image. It really depends on what situation you are in because there are a multitude of tools that you can use to get a perfect selection.



Here is where you can shine as a designer. You should always have an 'eye' to look out for something that you could use within a design...in this case the dragon disk is the perfect element to add to this design!

If you can develop this state of mind and think as a Photoshop designer and become aware of millions of things that no one else would even recognize or care about that you can use. Strive towards this level of passion and devotion because it will help set you ahead of other designers.

Photoshop has powerful blending modes that will instantly make a perfect match into the design. Here the circular marquee tool was used on the disk by holding down the shift key and moved it into exact position to get the circular selection in place. Use the move tool and drag it over into the design.



Now be aware of your layer order. You may have to move it below the top layers in the layers palette (depends on which layer you were last on) because in this case, you want it as part of the background (naturally). Try out some different blending modes. There are several that will work in this case...find something that you like.

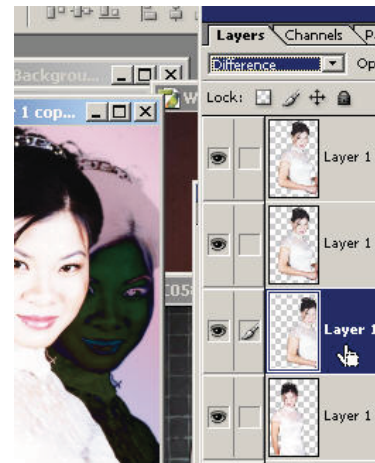


Here is the power of the blending modes like you've never seen them. Since you have such a clean source image, duplicate it and change the blending mode of the replicate layer to Hard Light (it will depend on your actual source images). This creates a perfect higher contrast immediately by mixing the light levels of the two layers. Hard Light (& Overlay) are favorite blending mode just because it's hardcore and effective in many circumstances. Here it just creates a healthier glow with shinier skin!



You can create some extra duplicate layers by dragging them to the new layer icon and have some fun by fooling around with the blending modes.

For instance, this one looks kind of evil on the "Difference" blending mode.



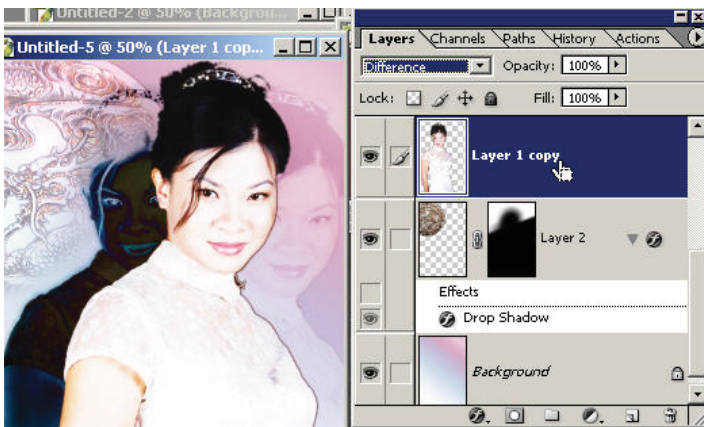
Soft light works here to blend this duplicate image (the Move tool was used to place it over and a little under off to the right). You could also just lower the opacity.



Here you've got the additional layer from the same photo shoot (different image) on pin light (for now) created on a layer mask on the dragon icon. You'll want to do this so that it blends more into the image and becomes part of the background and not taking up the space of the main portraiture.



Here's another evil twin...the darker half. Difference blending mode is just basically inverting the light data of the pixels with the layer beneath it. Because the original layer is so light, it is appearing very dark.

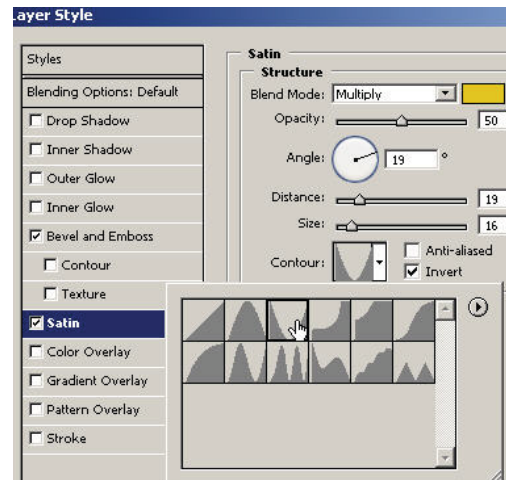


The beautiful text in this activity was kind of accident. It was intended to create a really large text behind her with her name (Carol) and immediately the tracking was at a really large negative number so the letters were really close together.

It's important to develop this awareness because if you didn't you could just skip it on by and you want your designs to have that extra special midas touch to them. Always ask yourself how you can improve and be ready to go in new directions and you can instantly verify as part of your feeling or direction of the vision in which you want to take the design.



Go into the blending mode/layer styles dialog box (double click on the layer icon or right click..) Choose Satin and use these exact specifications if you so desire.



You want this extra large text/logo layer to bridge the gap between fantasy and reality. Already it is looking very good, but just go ahead and take some time in the layer styles to get just the right effect that you feel is right. Develop your senses to 'know' what works and what doesn't.

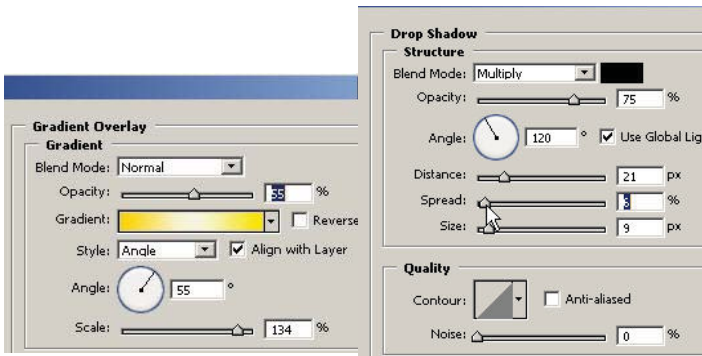


Above is the dialog when a copper gradient stroke was added. (gradient instead of fill under 'fill type'). Note how perfectly this works with this design. Use similar color elements when you can...Note that the intentional border that is left around the girl is a copper/maroonish color from the original document but yours may be different.

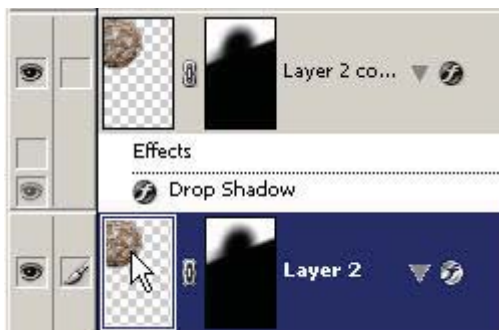
Adding a gradient on the text layer might just make a perfect and very subtle yet effective complement to the border around her. You can create great beauty in the details and making minor improvements/enhancements like this. Try out some different options if you want. Here is a trial rainbow gradient overlay...



Here are the exact settings I used for the rest of the superlarge text/vector/fantasy shape layer.



Here you can see that I've duplicated the dragon icon layer after layer masking it and note how it retains the layer mask on the duplicate. Now you can change the blending modes to find something that suits you (on the top layer).

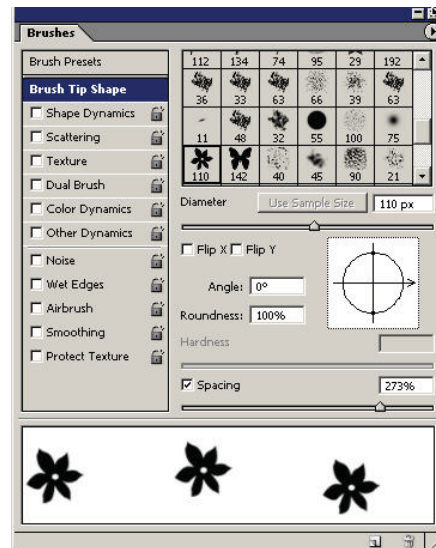


Go to your Brushes palette and choose an appropriate design brush. You must be on the Brush tool ('B') in order to access the brushes palette. Here you can change the brush dynamics. You can also choose the brush from the options bar menu.

Now add a little more vector balance to this design to top it off even more. This is just taking it to the next level. Can you feel the balance of bitmap (ie. photo) and vector (ie. text, shape)? In graphic design you want to create feelings and emotion that synergize with your target audience. These are created in a visual manner but can trigger internal emotions and (hopefully) positive references or associations from a person's internal state.

Just use the brush on a spaced apart setting (move the slider bar to the right from its condensed default) and maybe some 'Scattering' in that dialog box or Angle/Size Jitter under Shape Dynamics.

The goal here is to add just the right balance of feminine power and beauty so don't create too many condensed flowers. Oh yes, make sure you create a new blank layer to paint



these onto with your foreground color of choice (here...a pure dove white..interesting how it becomes more than just 'white').

Change the blending modes if you want. Either way you can't really harm the design at this level and a screen effect will also work nicely. You can see how the selected flowers start to mix light with the layers beneath on Overlay.

You can duplicate the layer, Ctrl click on the layer icon and then swipe the background gradient across (the one you created earlier) to

fill the flowers with the same color theme purple. This is also another option and then changing the blending mode. Turn the layers off and on with the eyeballs in the layers palette.

Here is the finished fantasy with the art which was used in this activity:

