



INTRODUCTION TO GRAPHICS

Cozy Type In Photoshop

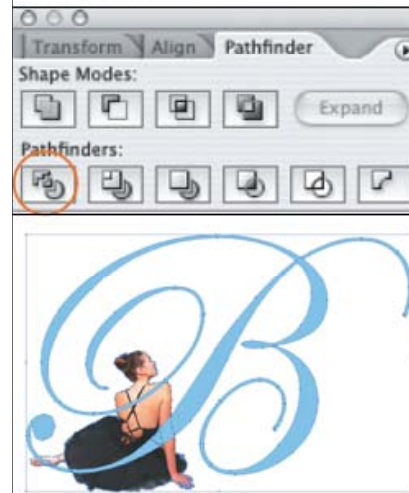
Information Sheet No. PS720

In just a few minutes you can intertwine script type within a photo using Photoshop and Illustrator.

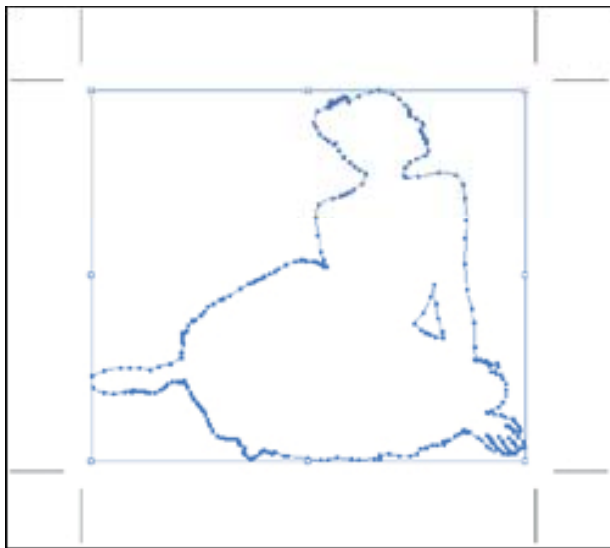
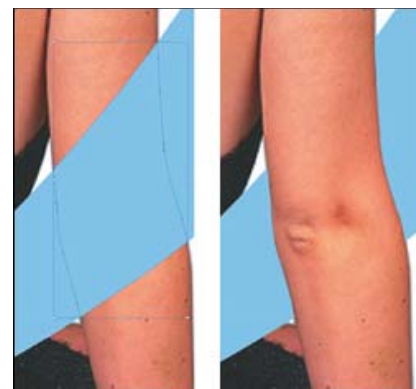
the paths. Select Object > Arrange > Send to Back. Then select Object > Crop Area > Release to remove the crop marks

4. Using the Type tool, type the letter B (Edwardian Script ITC shown here). Click the Selection tool. Select Outlines > Create Outlines. Scale the letter and set it over the image. Select the path and letter. In the Pathfinder palette, choose the Divide icon.

Tip: When placing the letter over the image, take note where the paths overlap to ensure that you're dividing the correct shapes that you'll want to later delete.



5. With the Direct Selection tool, select and delete the areas that apply.



1. Open document in Photoshop and create a path around an object. Select File > Export > Paths to Illustrator. Close the Photoshop document.

2. In Illustrator, select File > Open and choose the .ai (path) file you created. Select > All (Command-A) to see the paths. Press Command-G to group them together.



3. Select File > Place. Choose your file. Next choose Select > All. In the Align palette, click on both icons circled in the example (right). This will align the image with the path, or you can use the crop marks to align. Select

