



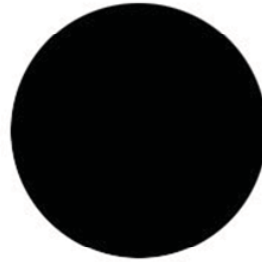
# INTRODUCTION TO GRAPHICS

## Christmas Balls III

Information  
Sheet No. PS660

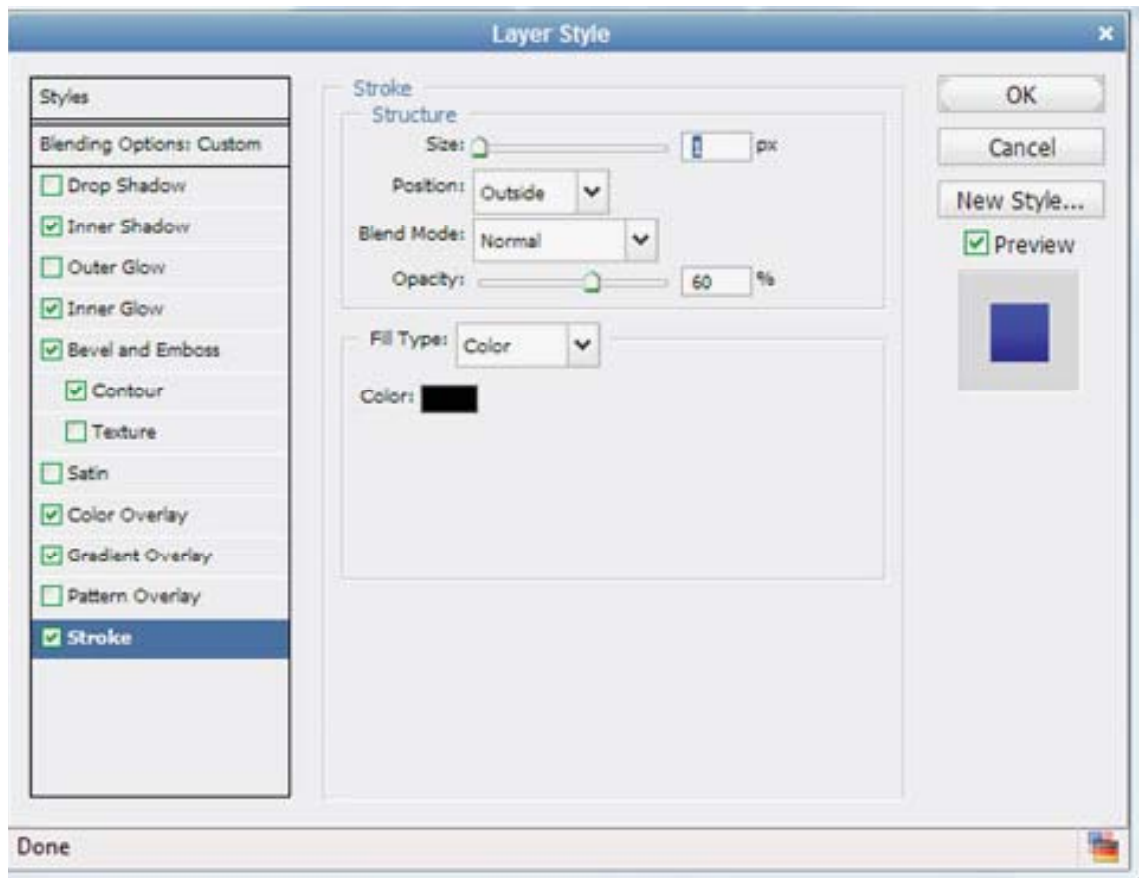
Learn how to make a shiny glass ornament with a snowflake motif for the holidays.

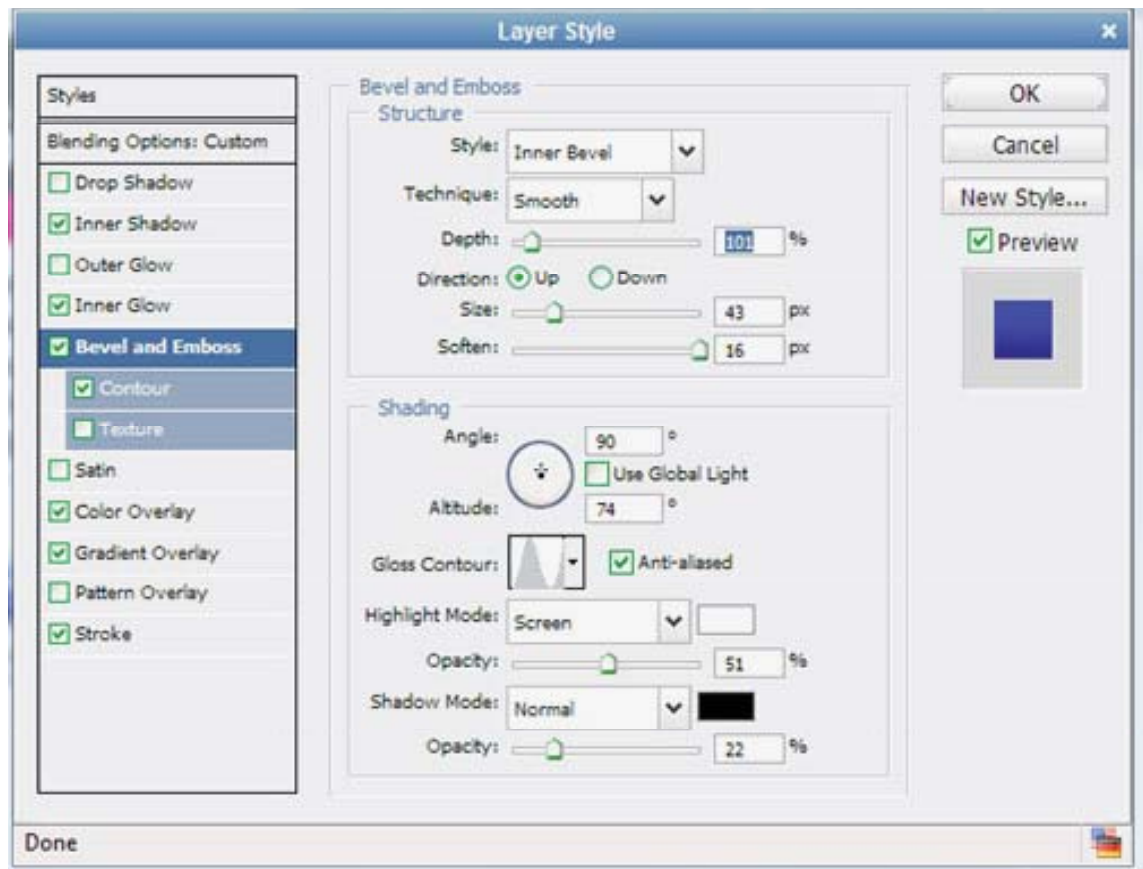
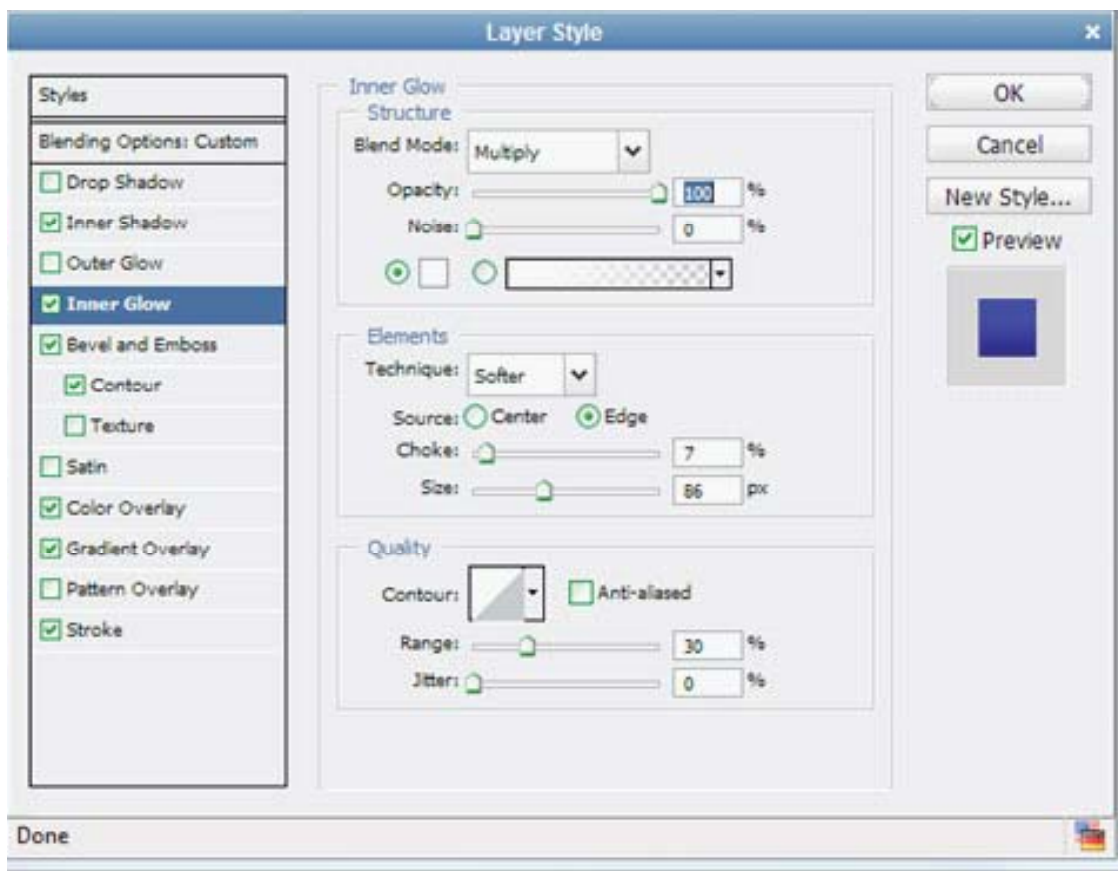
Start by creating a new document (mine's 300x300) and then make a new layer. On that layer ("ornament", create a large black circle using the circular marquee tool, in the size that you want your ornament (roughly 175px in diameter for this example-If you

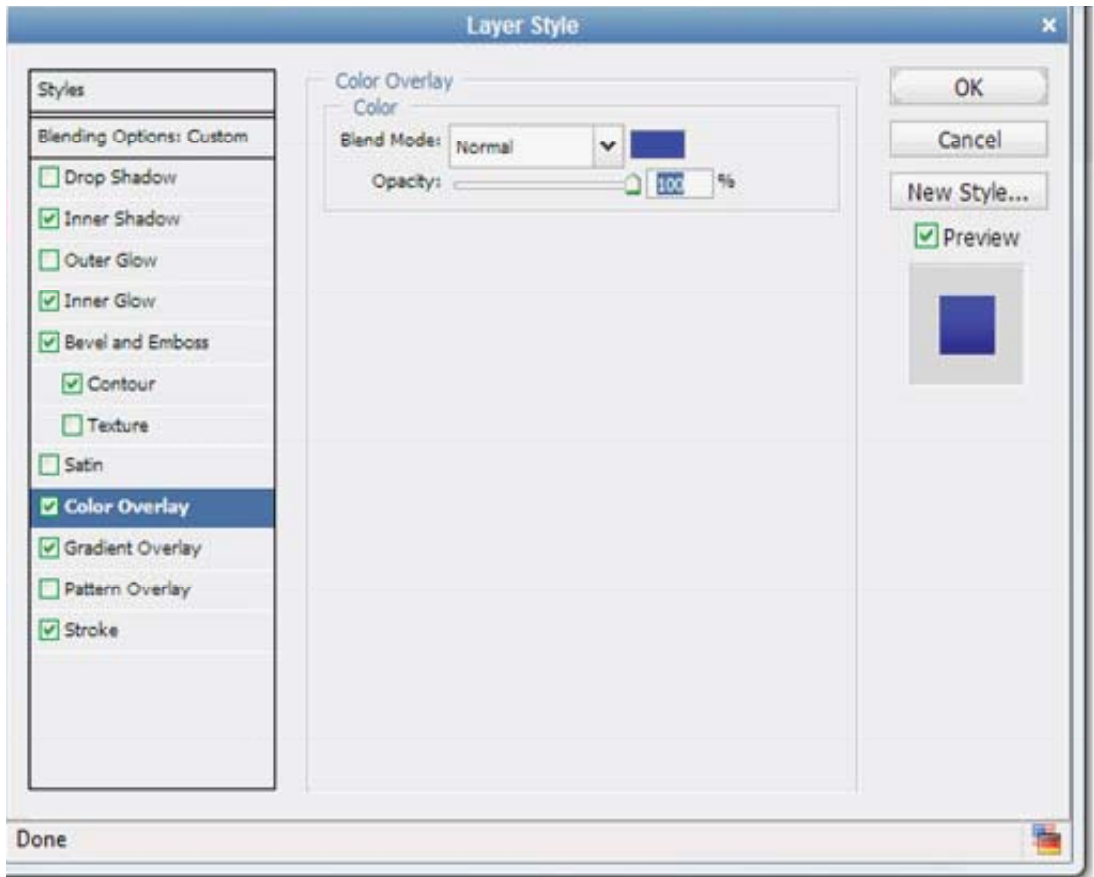
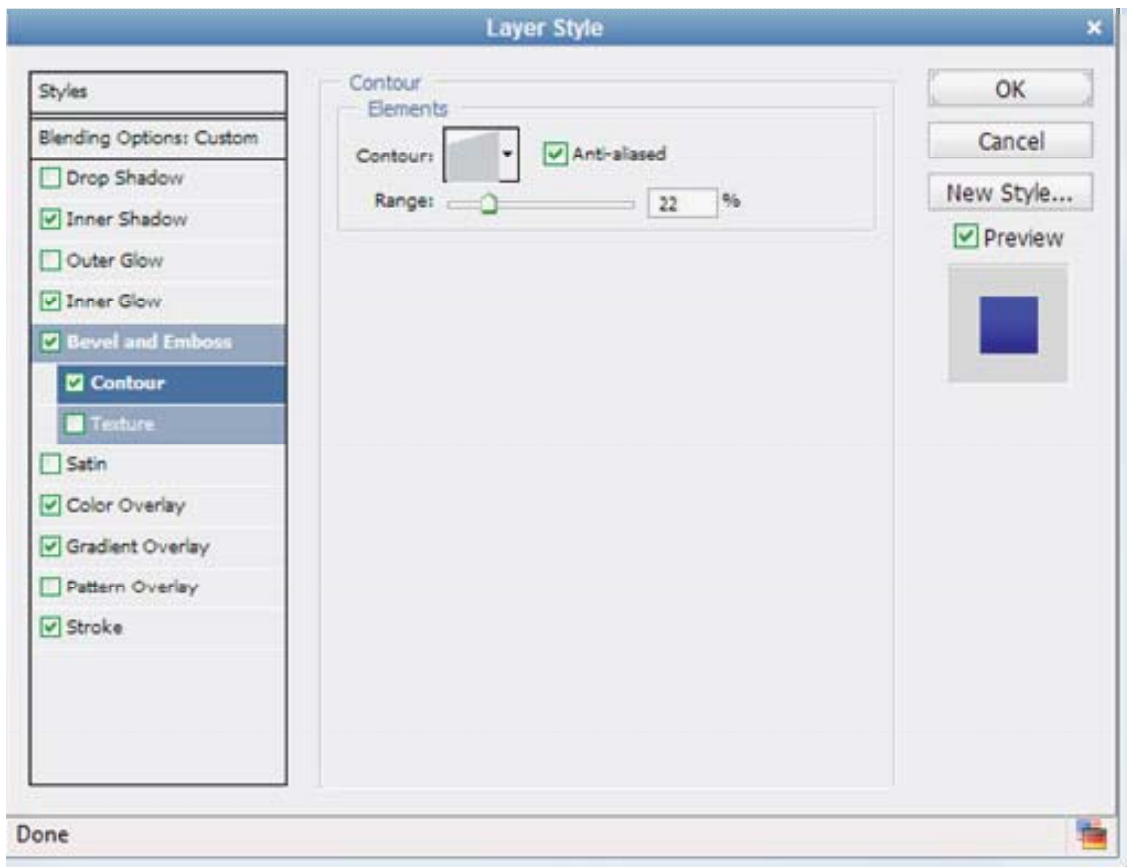


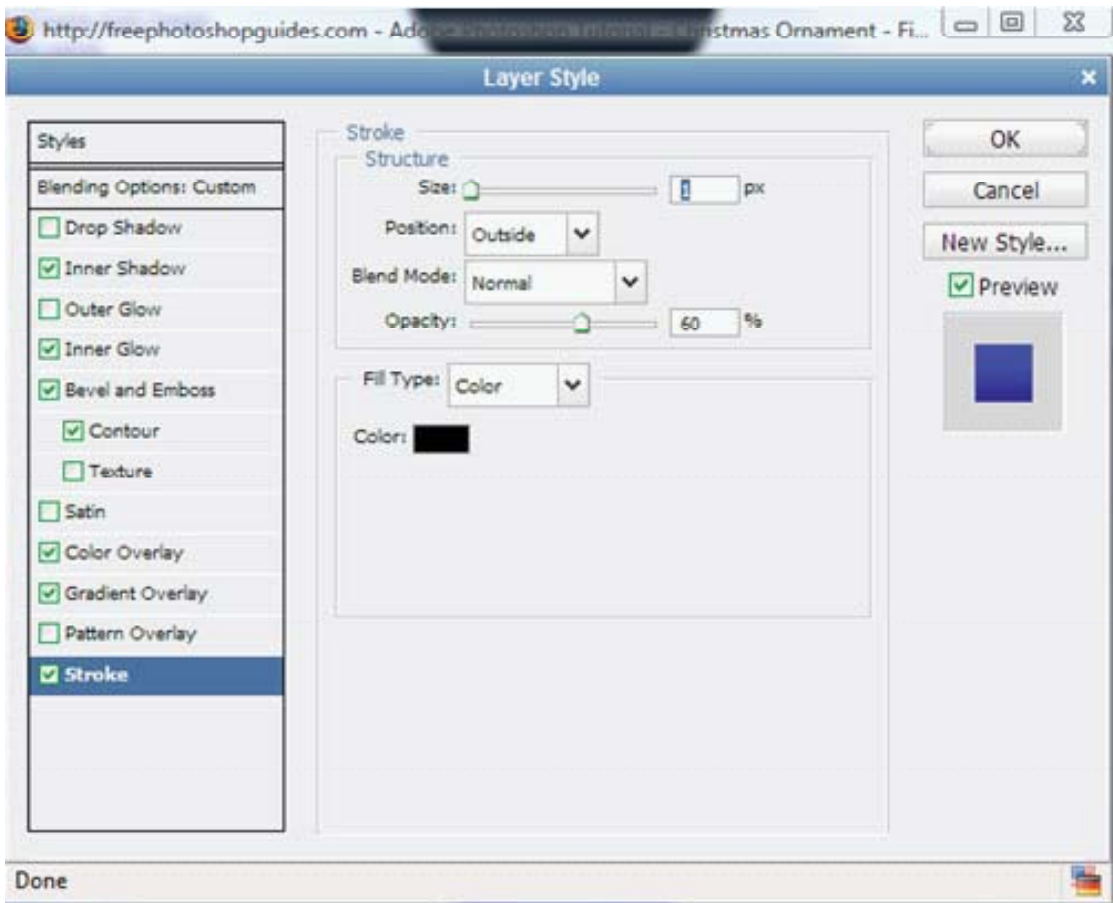
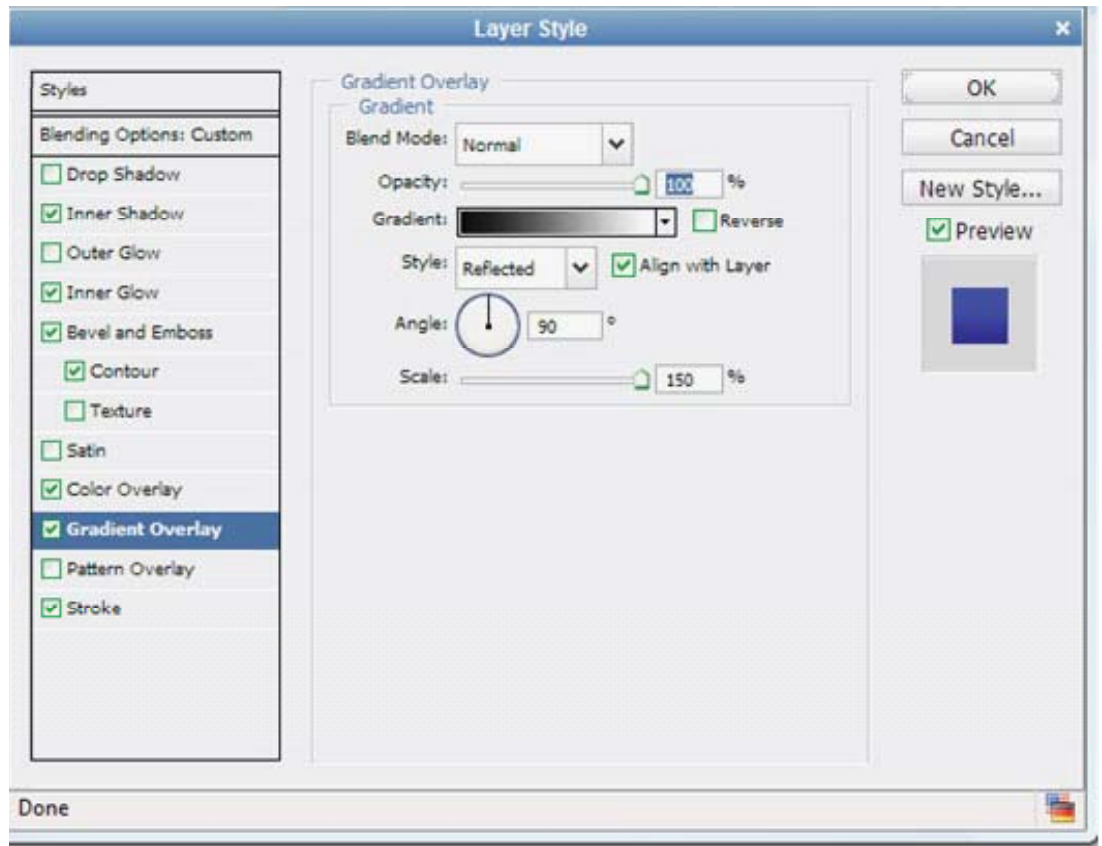
want to go larger or smaller, you'll have to adjust the layer styles used here to suit your needs accordingly).

The glass effect on this ornament is entirely created by layer styles, so double click on the layer in the Layers palette to bring up the Layer Effects palette and apply each of the following styles:









Your ornament should now look like this:



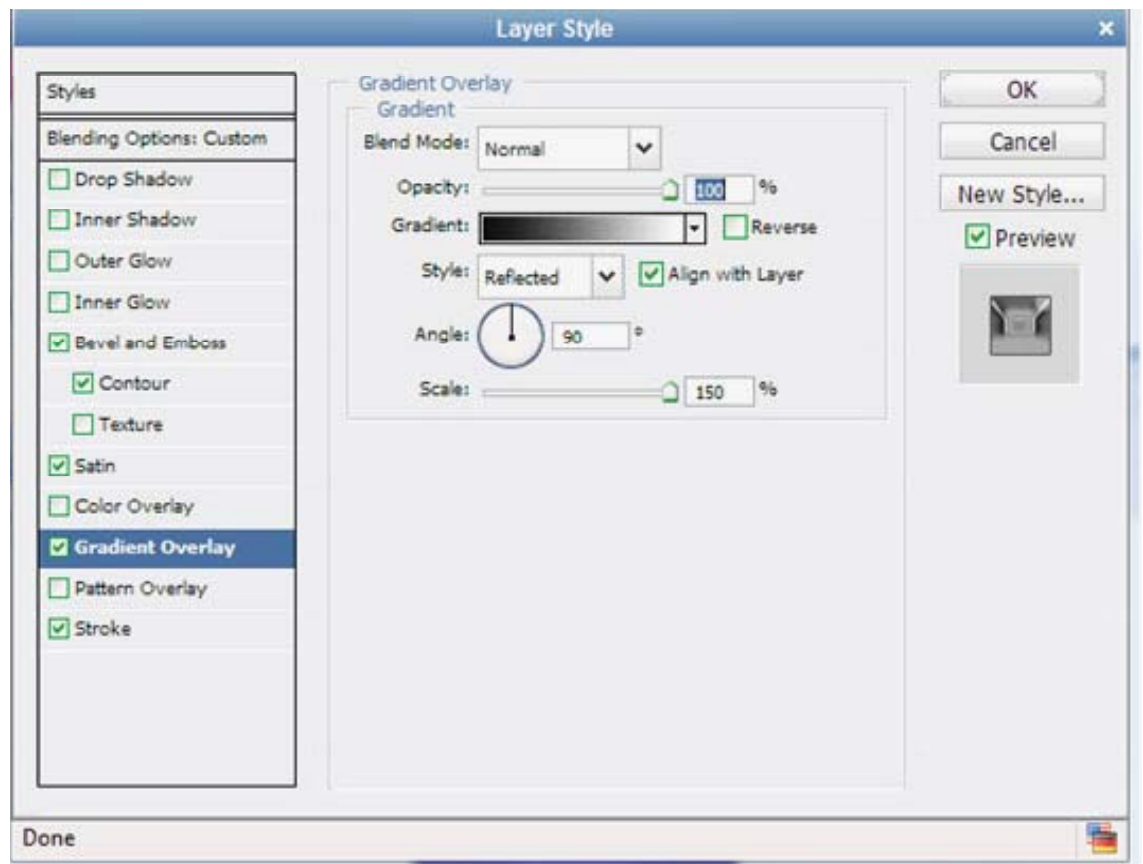
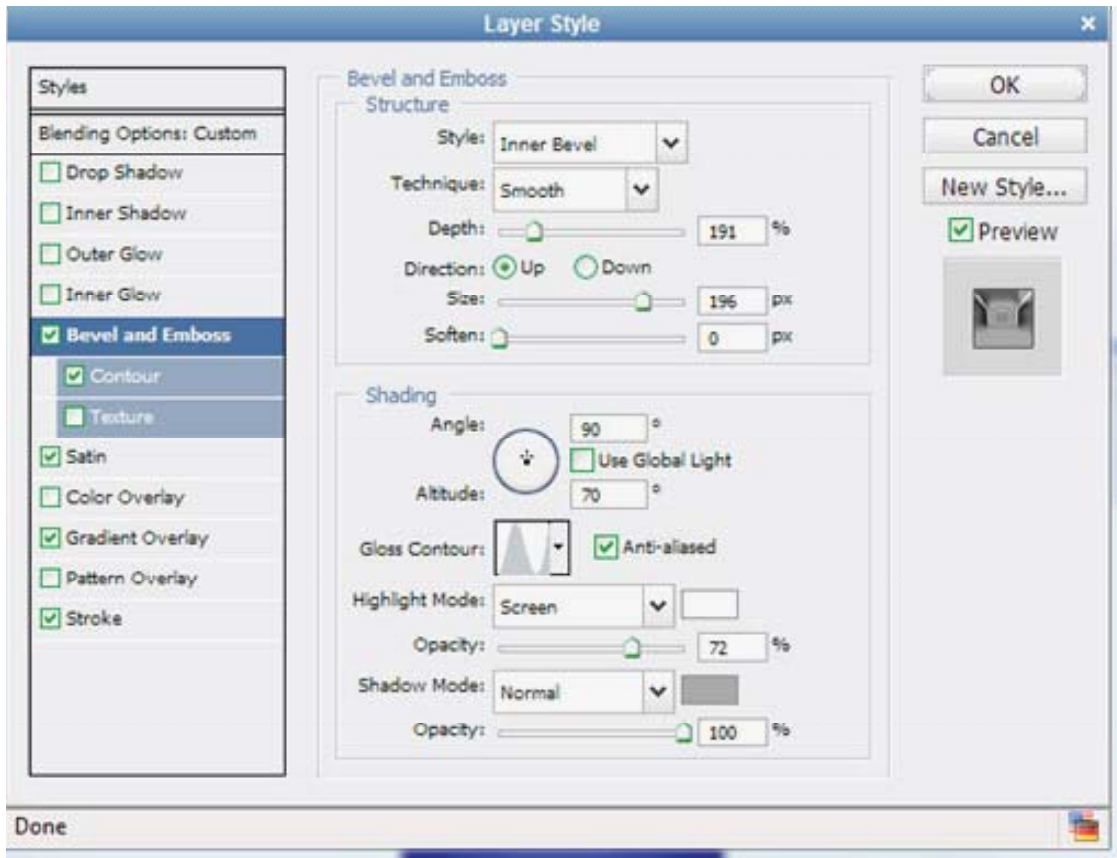
Now, create another new layer (call it "topper" and make a small, black, flattened oval about 45px wide and 15px tall. Center it above your ornament like so:

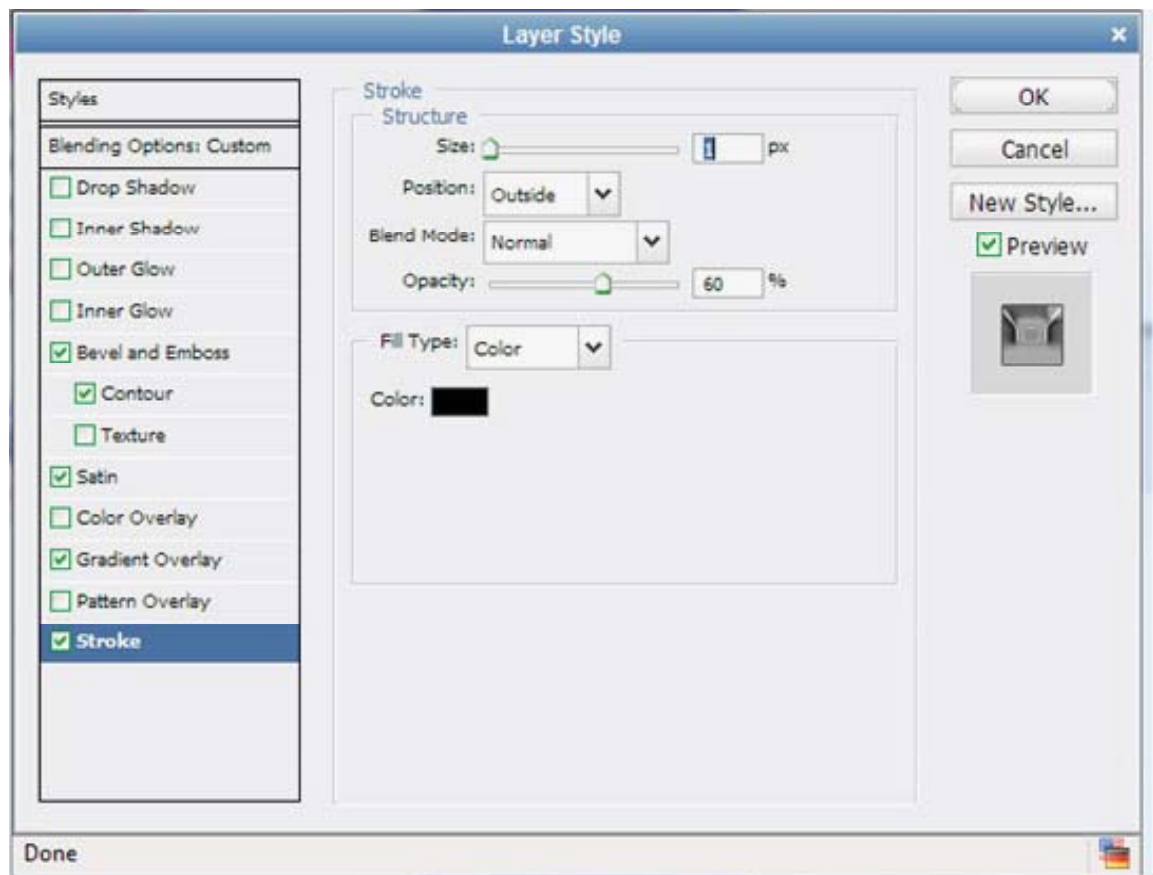
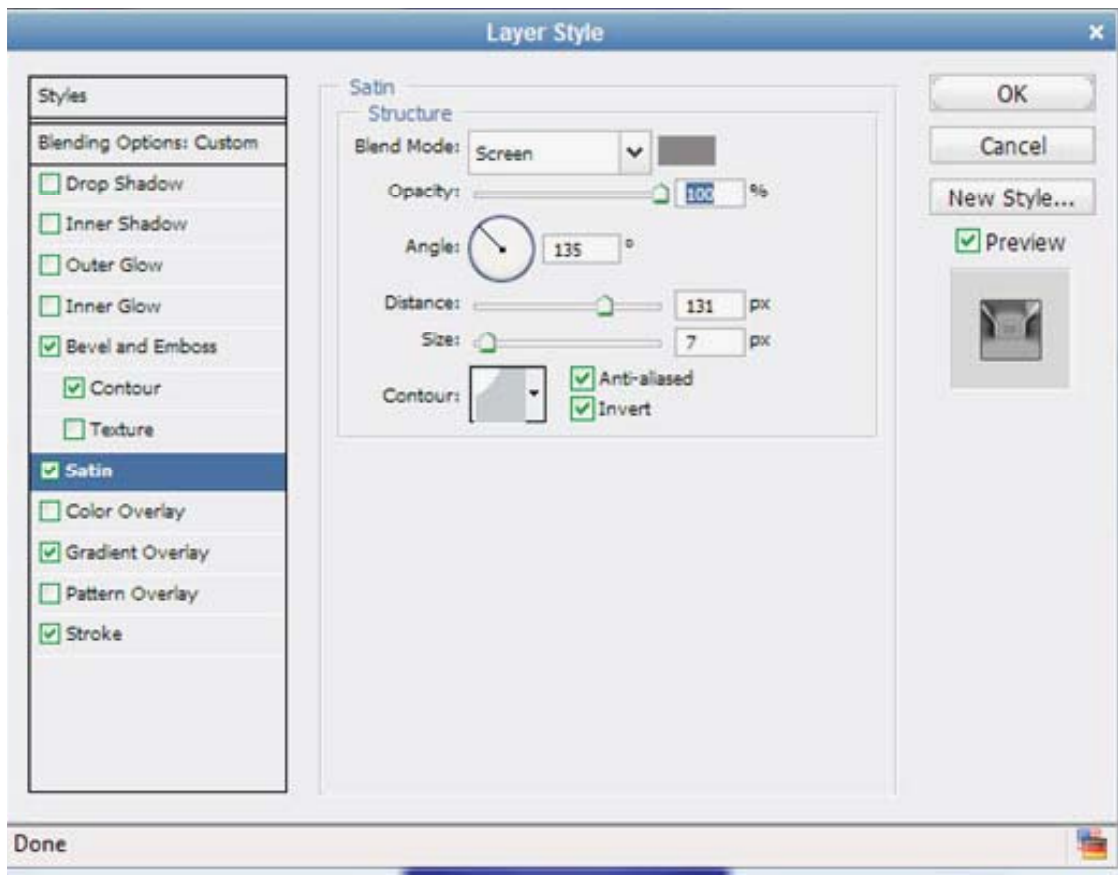


Now, Ctrl+Click on the layer's icon on the Layers palette to load its selection and hold down the Ctrl key while pressing the down arrow several times, to create a cylindrical shape for the ornament topper.



Now give the topper the following layer styles:





Now your ornament should look like this:



Next, create a new layer ("loop" and make a small, circular selection for the loop on the ornament topper. Go to Edit - Stroke and select a 4px inside black stroke.



Now Ctrl+Click on the "loop" layer's layer icon to load the selection and go to Select - Modify - Contract and enter a value of 1. Hit Ctrl+Alt+D to feather the selection and enter a value of 1. Set the foreground color to white and hit Alt+Backspace to fill the selection. Cut off the bottom part of the loop and then re-position it so that it's aligned to appear as if it's coming out of the ornament topper.



- Your ornament is really coming along. All we need to do now is the snowflakes. To do this, first create a new layer (call it something like "snowflake base" 😊) and Ctrl+Click on the "ornament" layer in the Layers palette to load its selection. Now fill this selection (on the "snowflake base" layer) with black. The black layer should obscure the ornament and part of the ornament topper underneath, like so



- Now take the custom shape tool and select one of the snowflake shapes (you should have a couple to choose from). Select the option to create "filled pixels" instead of paths or shape layers and be-

gin drawing white snowflakes, on a new layer, above the “snowflake base” (call the new layer “flakes” or something similar). It doesn’t really matter if some of these flakes extend beyond the edges of the base layer/ornament. In fact, it will look better if some of them do.

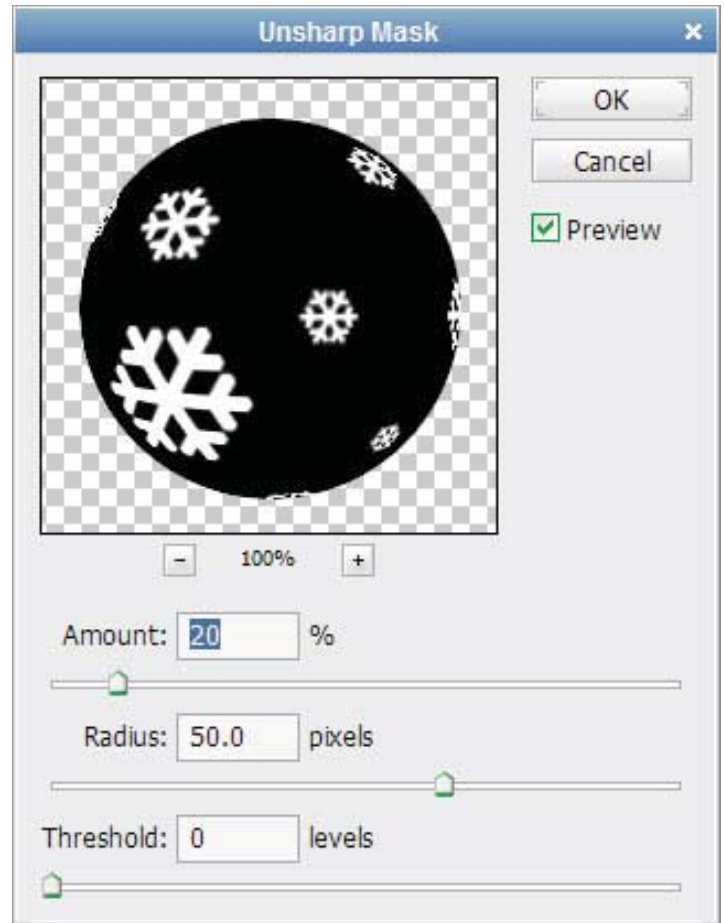


Now Ctrl+Click on the “snowflake base” layer in the Layers palette to load its selection and, with the “flakes” layer active, go to Filter - Distort - Spherize. Click “OK” to accept the default values.

Then hit Ctrl+ Shift+I to invert your selection and hit delete. Followed by Ctrl+E to merge the “flakes” layer with the “snowflake base” layer.



Now, our snowflakes are a little blurry because of the distortion, so let’s clean that up. Go to Filter - Sharpen - Unsharp Mask and enter the following settings:



(This was the whole point for creating the “snowflake base” layer to begin with, so you could later sharpen the edges of the snowflakes.)

Now set the layer mode to “Screen” and lower the layer opacity to 40%. There you have it, a finished ornament (I added a little drop shadow just to make it pop off the canvas a bit).

