



INTRODUCTION TO GRAPHICS

Alien Landscape

Information
Sheet No.
PS614

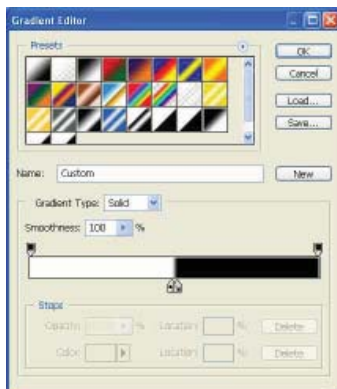
For this Information Sheet you will wax nostalgic and visit a 1950's science fiction vision of what it might be like on another planet. Photoshop will be your tool of choice.

To create an alien landscape, Begin by opening the photo in the designated folder.



What could be more foreign than a landscape folded over onto itself? To achieve this effect you'll use a classic masking technique. First I'll duplicate the background, then Edit>Transform>Flip Horizontal the Background copy layer; once flipped you'll add a mask to that layer.

This may be new, so let's walk through the technique quickly. Select the mask and click on the gradient tool. Make a gradient with very little separation (4% or so) between the white and black colors so there is very little 'gray area'. Save the gradient if you like and click OK. Next, draw the gradient through the mask from left to right.



Before you accept the background as-is, it is good to check what it would look like if the mask colors were inverted. Here is the alternate:

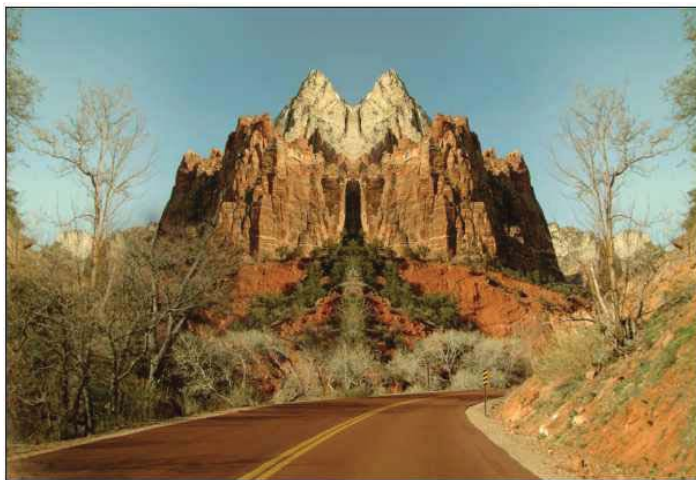
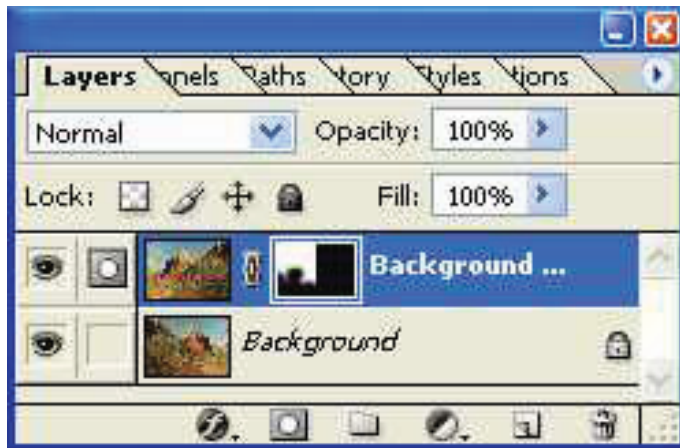


Maybe it's cool, and you can play with it later but for now, for now just re-invert the mask and stay with the original version.

To add a bit more realism to the scene, you probably don't want the entire image to have that mirror effect: just the mountain will

do. So in the mask paint with black in the mask to reveal the road and some of the trees on the left hand side of the layer.

There... that suits the 'alien landscape' a



bit better.

Ok, now create another copy of the background layer, select the masked layer and merge it with the new copy. The Layers Palette will look like this if you did it correctly.

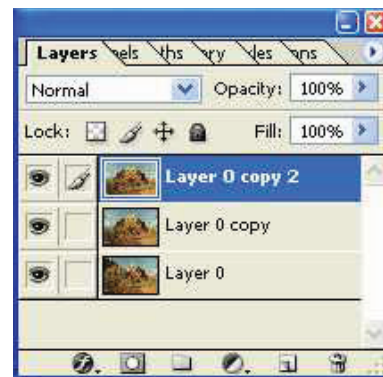
That's a good place to pause for a moment. To be a proper alien landscape you



need to add some space-like characteristics to the sky. Apply Image will work well for this. Use the planet scene file from the folder. Change its size to match the size of the first in pixel dimensions, or Apply Image will not work.

Next duplicate the top-most layer.

Apply Image will let you meld the selected

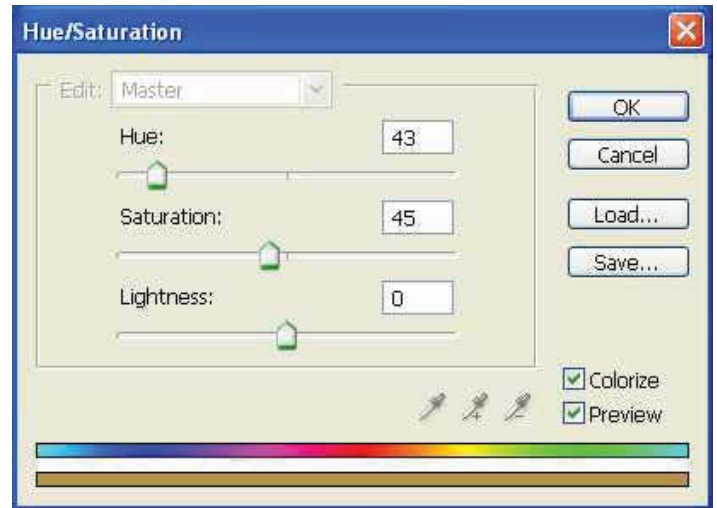
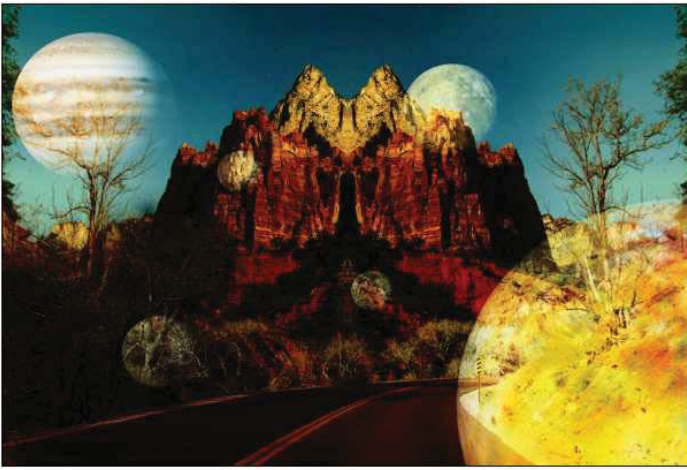


layer with the new image. Go to Image>Apply Image and set the second photo as the Source. The rest of my settings are seen below, as well as the result.



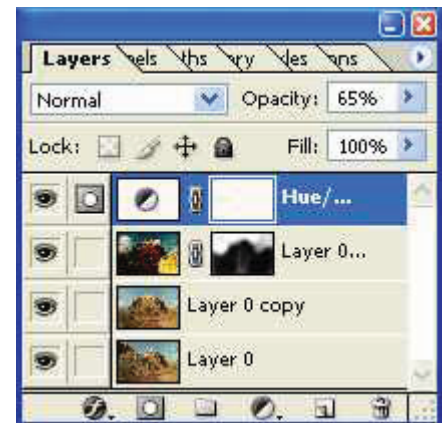
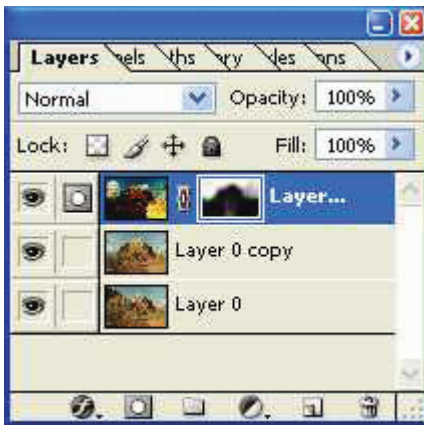
That's a scary mess, but a mask will again

N/08/08



help clean that up, wiping the planets from the foreground and leaving them in the sky where they belong.

To give the alien world-photo an aged

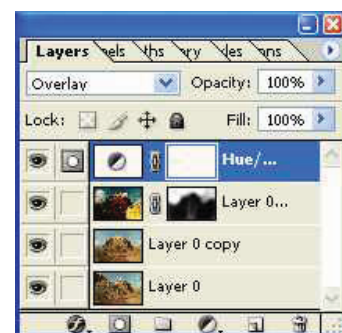


as you might see on older postcards, simply increase the opacity of the adjustment layer back to 100% and change the Blending Mode to Overlay.

look, just create a Hue/Saturation adjustment layer, select 'Colorize', alter the hue to an earth tone and then reduce the opacity of the Adjustment layer a bit (60-70% should do it.)

To give the image more vibrant color

You can always add some Alien text to



your postcard and it will then be ready to be sold on an internet auction. First, of course, you raise the money for a stamp!

