

# INTRODUCTION TO GRAPHICS

# Color Management Synchronization

Information Sheet No.



There are actually two parts to this article. The first involves how to synchronize the entire creative suite color management settings. The second involves how to specify settings for just one program if you ever need to.

## Synchronizing Color Management Settings for the entire suite.

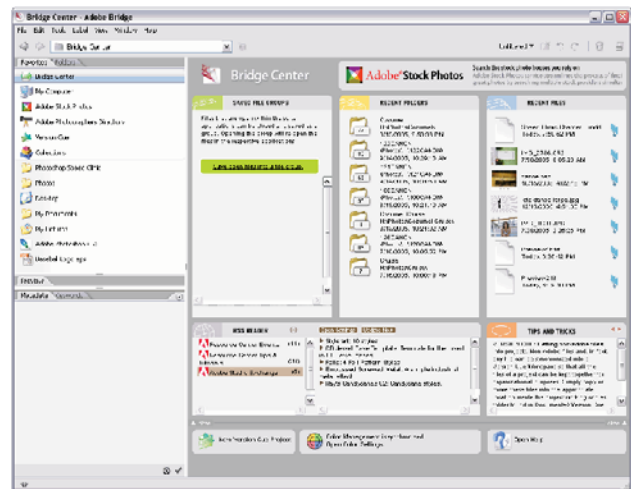
1. Open Bridge. Choose Edit > Creative Suite Color Settings to open the Suite Color Settings dialog. By default, the Creative Suite Color Settings are synchronized as displayed in this dialog.



2. To see more color setting profiles, select the "Show Expanded List of Color Settings Files" checkbox at the bottom of the dialog. To change your color settings for all creative suite applications just select it in the list and click the Apply button.



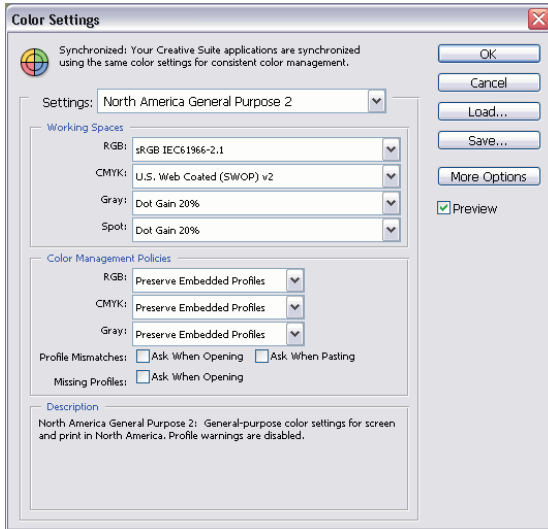
3. Click Cancel to close the dialog. The Creative Suite applications are now synchronized for color. You can always verify this by choosing Edit > Creative Suite Color in Bridge or by choosing Bridge Center in the Favorites panel. You'll see the current synchronization state at the bottom of the window.



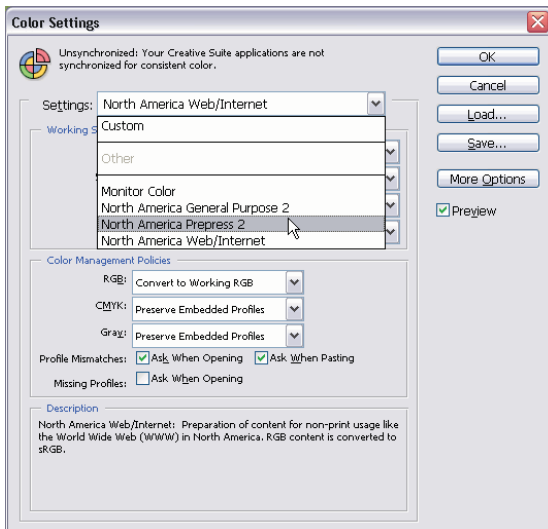
Now let's take a look at how to specify color management settings for just one program.

## Specifying a specific Color Management Setting for One Program

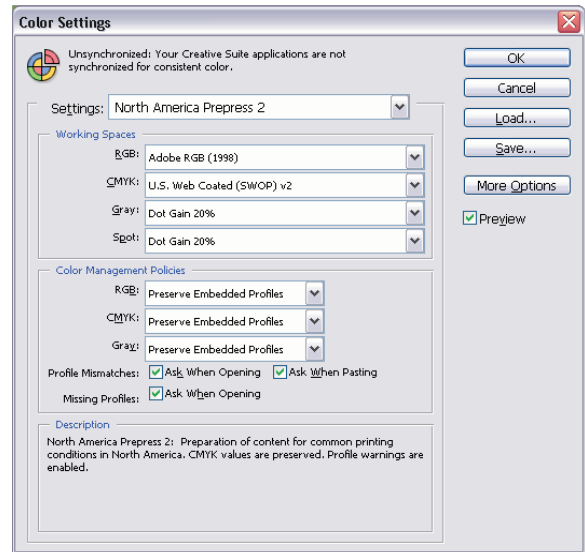
In Photoshop, choose Edit > Color Settings. This opens the Color Settings dialog. The first thing you'll see is the same icon you saw in the Creative Suite Color Settings dialog letting you know that color settings are synchronized.



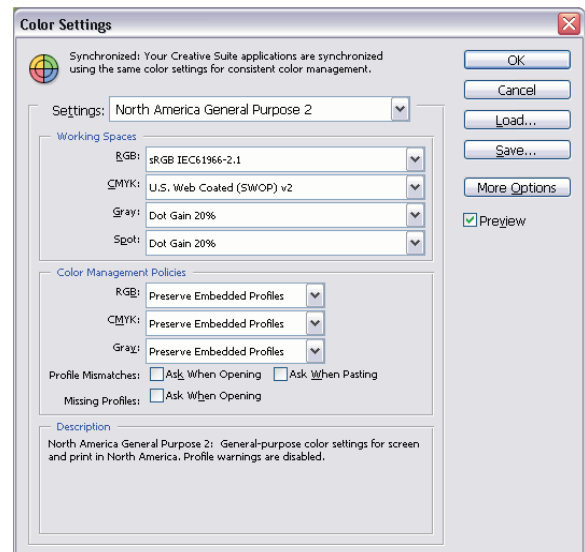
Choose something different from the Settings drop-down menu. In this example North American General Purpose 2 was changed to North America Prepress 2.



As soon as you make a new choice from the menu, the icon at the top will change to let you know that color settings are no longer synchronized for consistent color.



To resynchronize the color settings in the Creative Suite, either go through Photoshop's Color Settings dialog again or see Synchronizing Color Management Settings above.



That's really all there is to it. Now your color settings through the entire creative suite are the same. Also, if you like this type of tutorial then check